

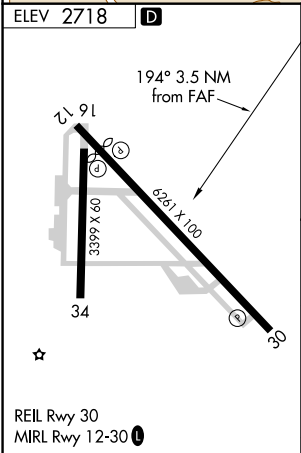
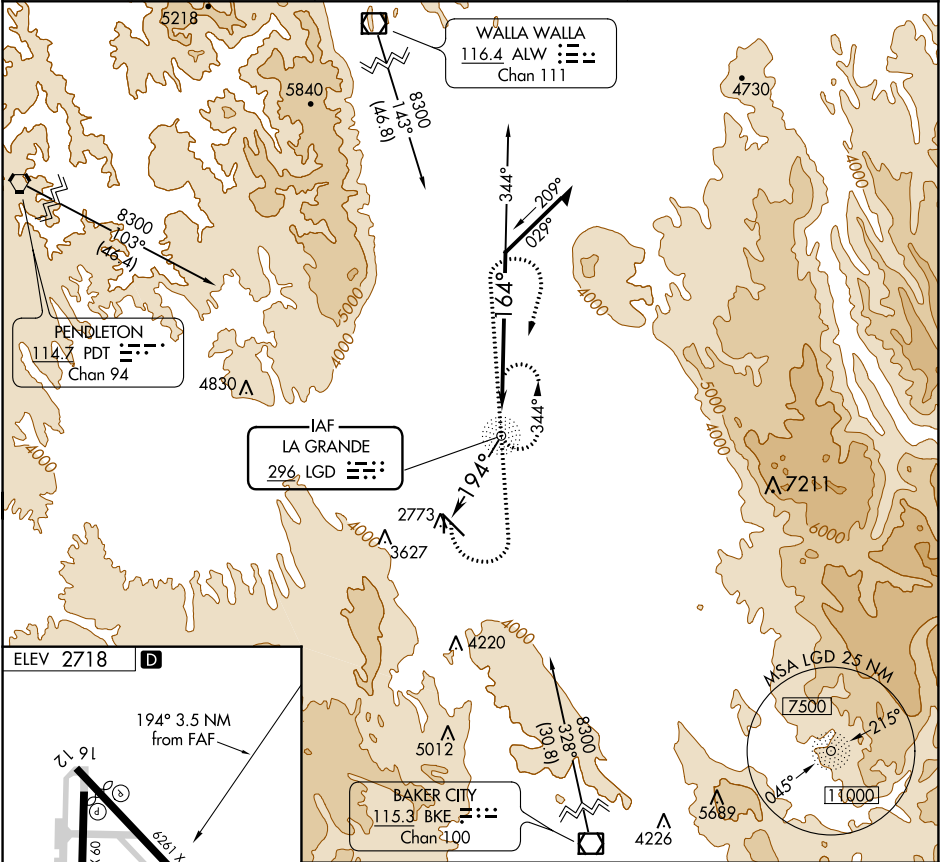
NDB LGD <b>296</b>	APP CRS <b>194°</b>	Rwy Idg TDZE Apt Elev <b>2718</b>	<b>N/A</b> <b>N/A</b> <b>2718</b>
-----------------------	------------------------	--	---

NDB-B

LA GRANDE/UNION COUNTY (LGD)

NA -16°C	Circling NA for Cat C southwest of Rwy 12-30.	MISSED APPROACH: Climbing left turn to 6000 direct LGD NDB and on 339° bearing from LGD NDB, then climbing right turn to 7700 direct LGD NDB and hold.
-------------	---	--

AWOS-3PT <b>135.075</b>	SEATTLE CENTER <b>132.6 269.35</b>	UNICOM <b>122.8 (CTAF) 0</b>
----------------------------	---------------------------------------	---------------------------------



6000 LGD	LGD 339°	7700 LGD	LGD NDB	Remain within 10 NM
10000				
344°				
164°				
6000				
3.5 NM				
CATEGORY	A	B	C	D
CIRCLING	4860-1¼ 2142 (2200-1¼)	4860-1½ 2142 (2200-1½)	4860-3 2142 (2200-3)	NA

NW-1, 03 DEC 2020 to 31 DEC 2020

NW-1, 03 DEC 2020 to 31 DEC 2020