

APP CRS	Rwy Idg	<b>9002</b>
<b>026°</b>	TDZE	<b>4744</b>
	Apt Elev	<b>4744</b>

# RNAV (RNP) Z RWY 3

RNP AR APCH. RF required.

**T** For uncompensated Baro-VNAV systems, procedure NA below -27°C or above 49°C.

**MISSED APPROACH:** Climb to 7500 on track 026° to TOCYU left turn to UFGOD, then track 253° to TERRE and hold.

ATIS  
**135.325**

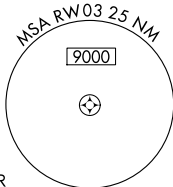
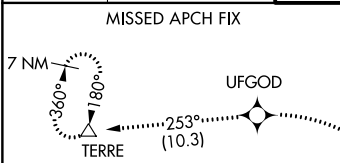
SALT LAKE CENTER  
128.35 239.25

IDAHO FALLS TOWER★  
118.5 (CTAF) **L** 257.8

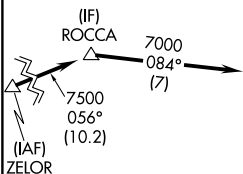
GND COM  
121.7

CLNC DEL  
**121.7**

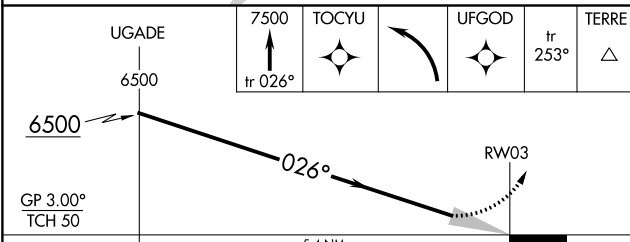
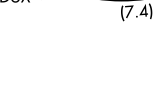
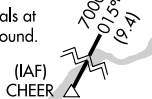
GCO  
121.725

UNICOM  
122.95

Procedure NA for arrivals at ZELOR  
on V365 southwest bound.



### Procedure NA for arrivals at CHEER on V21 south bound.



CATEGORY	A	B	C	D
RNP.0.11 DA	5013-7 <sub>8</sub> 269 (300-7 <sub>8</sub> )			
RNP.0.30 DA	5071-1 327 (400-1)			

**AUTHORIZATION REQUIRED**

