

WAAS CH 61010 W16B	APP CRS 164°	Rwy Idg 9426 TDZE 430 Apt Elev 433
--	------------------------	---

RNAV (GPS) Y RWY 16C
SEATTLE-TACOMA INTL (SEA)

SEATTLE-TACOMA INTL (SEA)

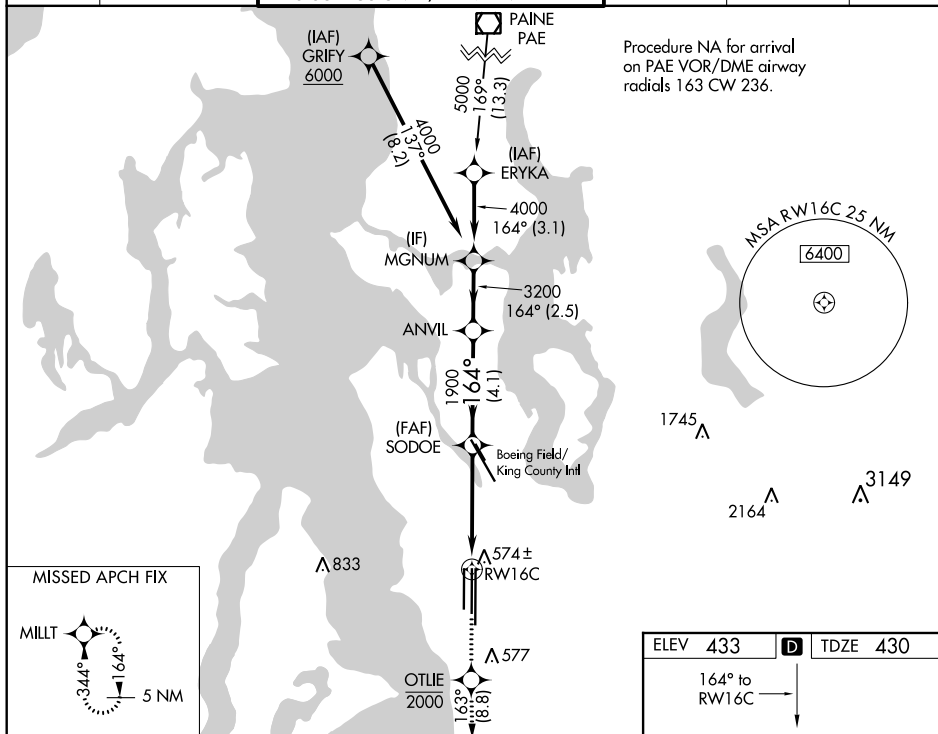
T For uncompensated Baro-VNAV systems, LNAV/VNAV NA below -6°C (22°F) or above 54°C (130°F). DME/DME RNP-0.3 NA. For inop ALS, increase LNAV Cats C/D visibility to 1%. See additional requirements on adjacent information page.

ALSF-2



MISSED APPROACH: Climb direct OTLIE to cross OTLIE at or below 2000, then climb to 5000 on track 163° to MILLT and hold, continue climb-in-hold to 5000.

D-ATIS 118.0	SEATTLE APP CON 133.65 273.45	SEATTLE TOWER 119.9 239.3 (Rwys 16L, 16C, 34C, 34R) 120.95 239.3 (Rwys 16R, 34L)	GND CON 121.7	CLNC DEL 128.0	CPDLC
------------------------	---	--	-------------------------	--------------------------	-------

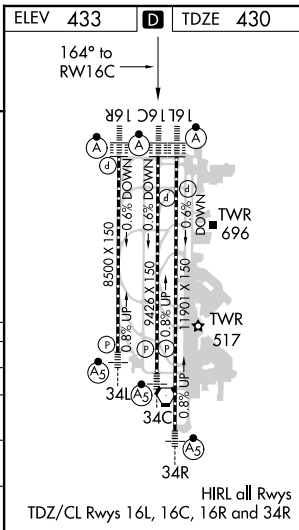
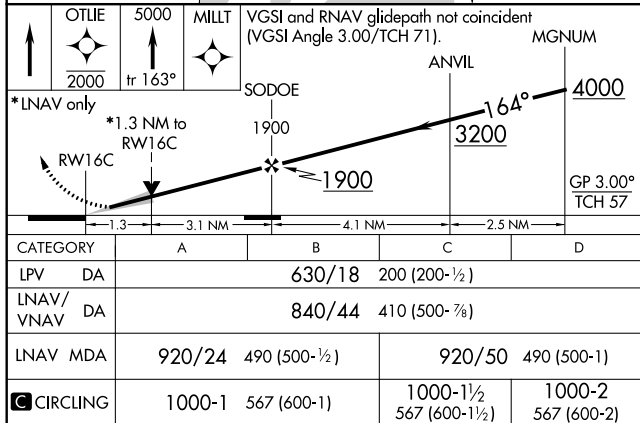


Procedure NA for arrival
on PAE VOR/DME airway
radials 163 CW 236.

1745 Δ 2164^A

3149

ELEV 433	D	TDZE 430
----------	----------	----------

164° to
RW16C →

SEATTLE, WASHINGTON

Amdt 3A 12OCT17

SEATTLE-TACOMA INTL (SEA)

47°27'N-122°19'W

RNAV (GPS) Y RWY 16C