

APP CRS 164°	Rwy Idg 8500 TDZE 415 Apt Elev 433
------------------------	---

RNAV (RNP) Z RWY 16R

SEATTLE-TACOMA INTL (SEA)

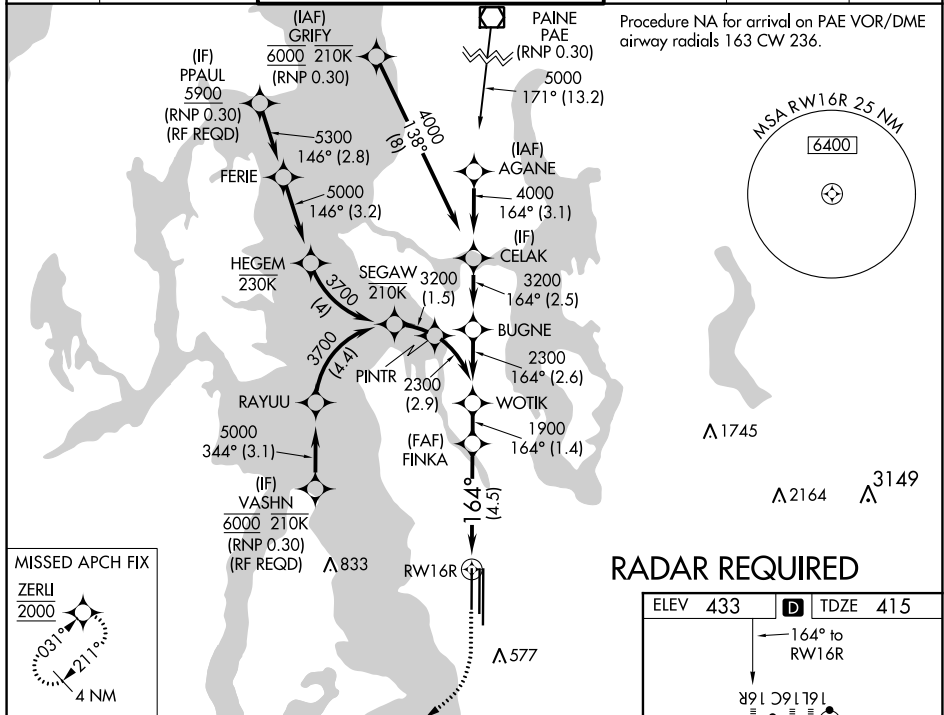
▼ For uncompensated Baro-VNAV systems, procedure NA below -6°C (22°F) or above 54°C (130°F). Simultaneous approach authorized with Rwy 16L, except for arrivals at PPAUL and VASHN. GPS required. Use of FD or AP providing RNAV track guidance required during simultaneous operations. For inop ALS, increase RNP 0.15 all Cats visibility to RVR 5800, increase RNP 0.30 all Cts visibility to 1½ SM.

ALSF-2



MISSED APPROACH: Climb to 900 then climbing right direct ZERLI to cross ZERLI at 2000 and hold.

D-ATIS 118.0	SEATTLE APP CON 133.65 273.45	SEATTLE TOWER 119.9 239.3 (Rwys 16L, 16C, 34C, 34R) 120.95 239.3 (Rwys 16R, 34L)	GND CON 121.7	CLNC DEL 128.0	CPDLC
-----------------	----------------------------------	--	------------------	-------------------	-------



RADAR REQUIRED

900
↑

ZERLI
2000

VGSI and RNAV glidepath not coincident
(VGSI Angle 3.00/TCH 69).

FINKA
1900

WOTIK
2300

164°

1900

GP 3.00°
TCH 55

See planview for multiple IF locations.

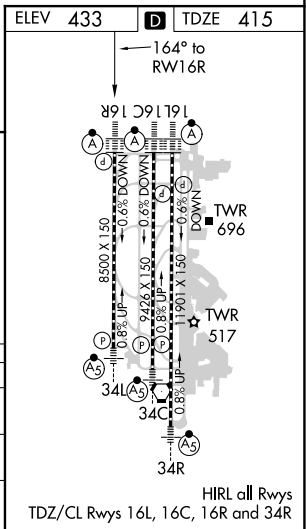
RW16R

4.5 NM

1.4 NM

CATEGORY	A	B	C	D
RNP 0.15 DA	770/34 355 (400-5%)			
RNP 0.30 DA	854/50 439 (500-1)			

AUTHORIZATION REQUIRED



RNAV (RNP) Z RWY 16R