

JEFPO ONE DEPARTURE (RNAV)

AL-582 (FAA)

SEATTLE-TACOMA INTL (SEA)  
SEATTLE, WASHINGTON

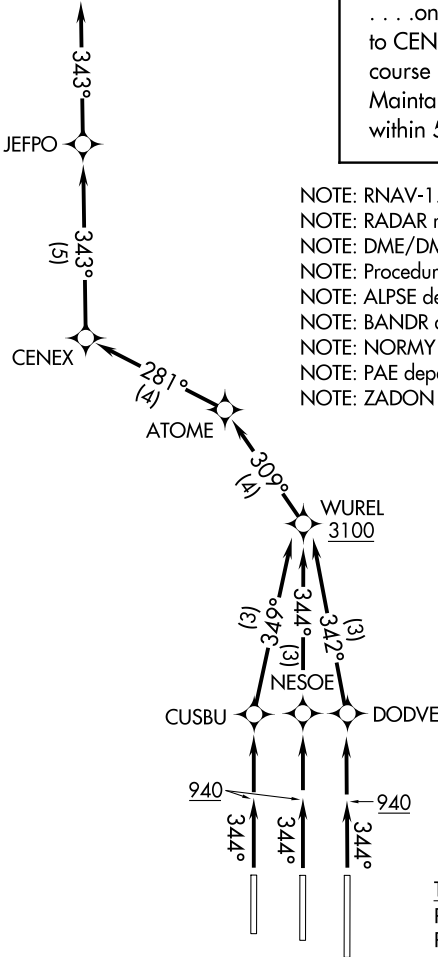
D-ATIS  
118.0  
CLNC DEL  
128.0  
CPDLC  
GND CON

121.7  
SEATTLE TOWER  
119.9 239.3 (Rwys 16L/34R, 16C/34C)  
120.95 239.3 (Rwy 16R/34L)  
SEATTLE DEP CON  
120.4 269.125

TOP ALTITUDE:  
9000

ALPSE

PAINE  
PAE



- NOTE: RNAV-1.  
NOTE: RADAR required.  
NOTE: DME/DME/IRU or GPS required.  
NOTE: Procedure available from 2200 to 0600 local.  
NOTE: ALPSE departures expect direct/vectors to ALPSE.  
NOTE: BANDR departures expect direct/vectors to BANDR.  
NOTE: NORMY departures expect direct/vectors to NORMY.  
NOTE: PAE departures expect direct/vectors to PAE VOR/DME.  
NOTE: ZADON departures expect direct/vectors to ZADON.

TAKEOFF MINIMUMS  
Rwys 16L/C/R: NA, ATC.  
Rwys 34L/C/R: Standard with minimum climb  
of 500' per NM to 940.

NOTE: Chart not to scale.

JEFPO ONE DEPARTURE (RNAV)