

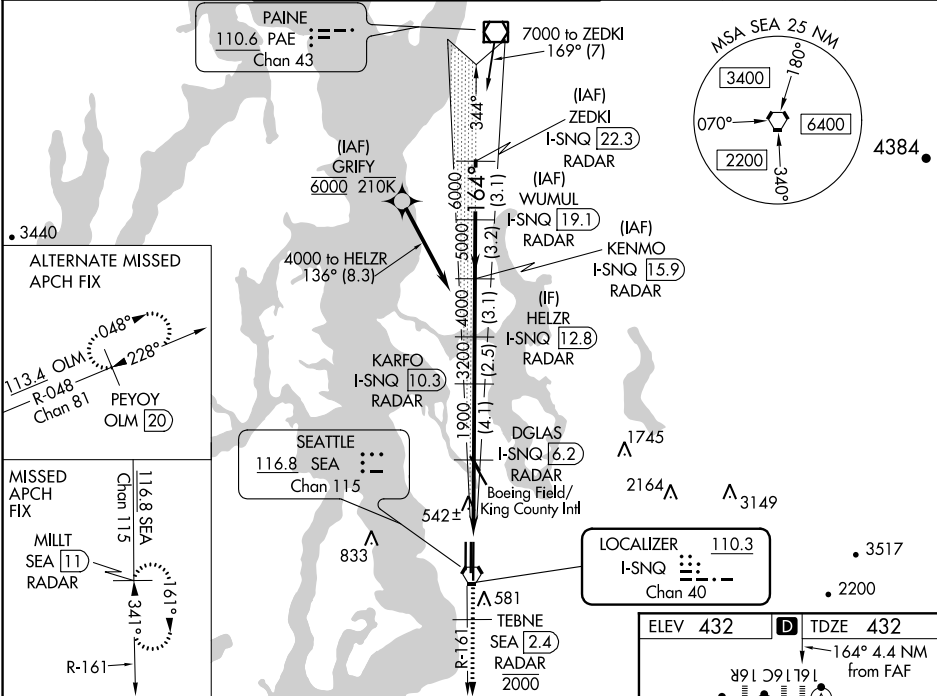
LOC/DME F-SNQ <b>110.3</b> Chan <b>40</b>	APP CRS <b>164°</b>	Rwy ldg <b>11901</b> TDZE <b>432</b> Apt Elev <b>432</b>
---	------------------------	--

ILS or LOC RWY 16L  
SEATTLE-TACOMA INTL (SEA)

DME or RADAR required. From GRIFY:RNAV 1-GPS required.

ALSIF-2  
MISSED APPROACH: Climb to 900 on heading 165° then on SEA VORTAC R-161 to cross TEBNE/SEA 2.4 DME/RADAR at or below 2000 then climb to 5000 on SEA VORTAC R-161 to MILIT/SEA 11 DME/RADAR and hold, continue climb-in-hold to 5000.

D-ATIS <b>118.0</b>	SEATTLE APP CON <b>133.65 273.45</b>	SEATTLE TOWER <b>119.9 239.3</b> (Rwys 16L, 16C, 34C, 34R) <b>120.95 239.3</b> (Rwys 16R, 34L)	GND CON <b>121.7</b>	CLNC DEL <b>128.0</b>	CPDLC
------------------------	---	--	-------------------------	--------------------------	-------



900 ↑ hgd 165°	SEA R-161	TEBNE SEA <b>2.4</b> 2000	5000 SEA R-161	MILIT SEA <b>11</b>	VGSI and ILS glidepath not coincident (VGSI Angle 3.00/TCH 76).				ZEDKI I-SNQ <b>22.3</b> RADAR	
*LOC only					HELZR I-SNQ <b>12.8</b> RADAR	KENMO I-SNQ <b>15.9</b> RADAR	WUMUL I-SNQ <b>19.1</b> RADAR	RADAR		
I-SNQ <b>1.8</b>					DGLAS I-SNQ <b>6.2</b> RADAR	KARFO I-SNQ <b>10.3</b> RADAR	164° 7000 6000			
I-SNQ <b>2.9</b>					1900	3200	4000	5000	6000	
1.2 NM					3.3 NM	4.1 NM	2.5 NM	3.1 NM	3.2 NM	3.1 NM
CATEGORY	A				B		C		D	
S-ILS 16L	697/20 265 (300-½)				632/18 200 (200-½)					
S-LOC 16L	880/24 448 (500-½)				880/45 448 (500-¾)					
CIRCLING	1000-1 568 (600-1)				1000-1½ 568 (600-1½)			1000-2 568 (600-2)		

