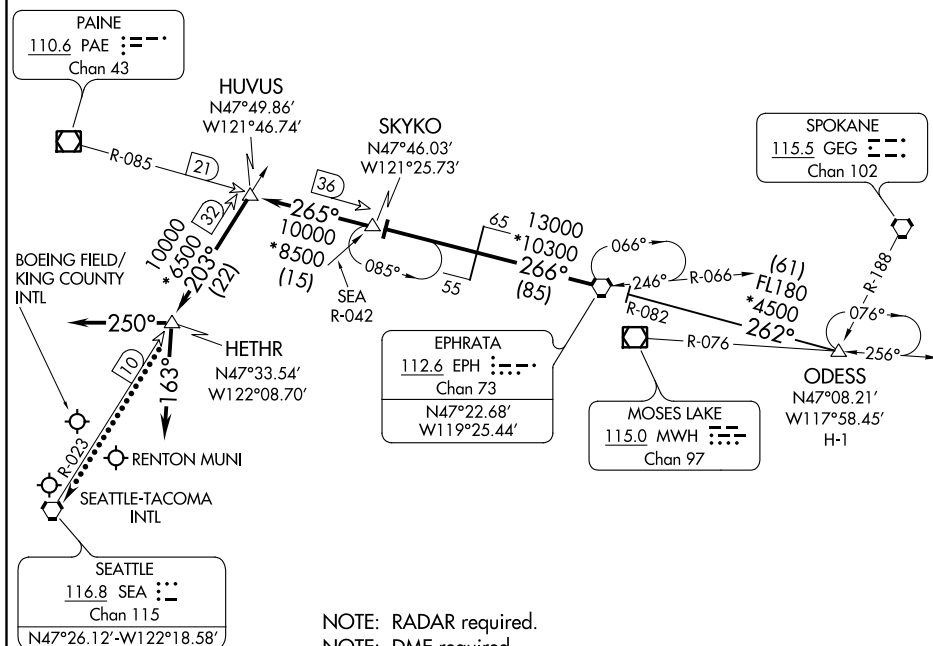


SEATTLE APP CON	
123.9	338.2
BFI ATIS	
127.75	
RTN ATIS	
126.95	
SEA D-ATIS	
118.0	



NOTE: RADAR required.
NOTE: DME required.
NOTE: Procedure for non-turbojet aircraft only.

NOTE: Chart not to scale.

ARRIVAL ROUTE DESCRIPTION

ODESS TRANSITION (ODESS.EPH8): From over ODESS INT on EPH R-082 to EPH VORTAC. Thence

... from EPH VORTAC on EPH R-266 and PAE R-085 to SKYKO INT, then on PAE R-085 to HUVUS INT, then on SEA R-023 to HETHR INT, thence ...

LANDING NORTH: Heading 163°. Expect RADAR vectors to final approach course.

LANDING SOUTH: Heading 250°. Expect RADAR vectors to final approach course.

LOST COMMUNICATIONS: From over HETHR proceed direct SEA VORTAC.