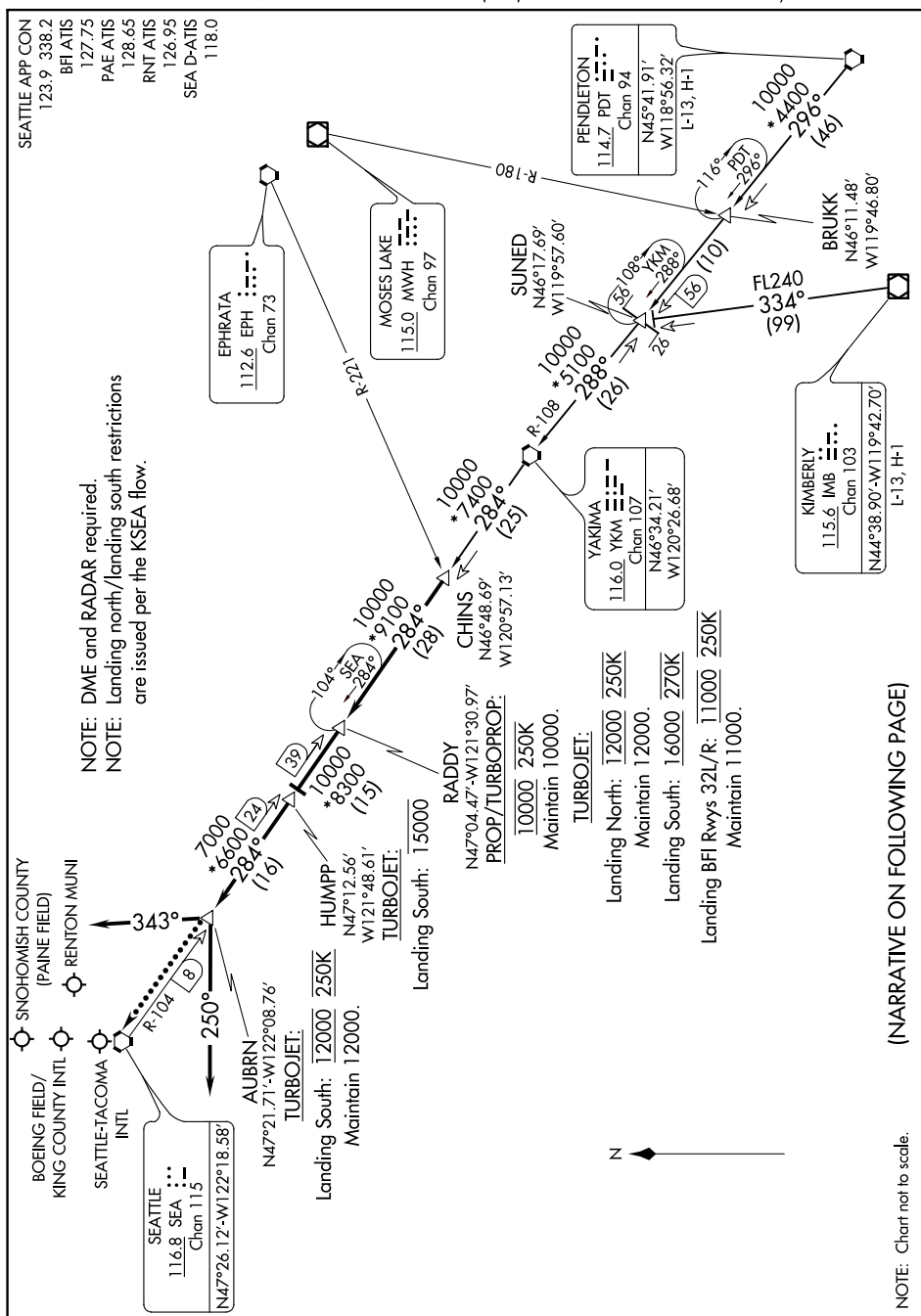


CHINS FOUR ARRIVAL

AL-582 (FAA)

SEATTLE, WASHINGTON



NOTE: DME and RADAR required.
NOTE: Landing north/landing south restrictions are issued per the KSEA flow.

(NARRATIVE ON FOLLOWING PAGE)

NOTE: Chart not to scale.

NW-1, 03 DEC 2020 to 31 DEC 2020

CHINS FOUR ARRIVAL

(CHINS.CHINS4) 05DEC19

SEATTLE, WASHINGTON