

APP CRS	Rwy Idg	6511
084°	TDZE	1440
	Apt Elev	1442

RNAV (RNP) Z RWY 8

LEWISTON-NEZ PERCE COUNTY (LWS)

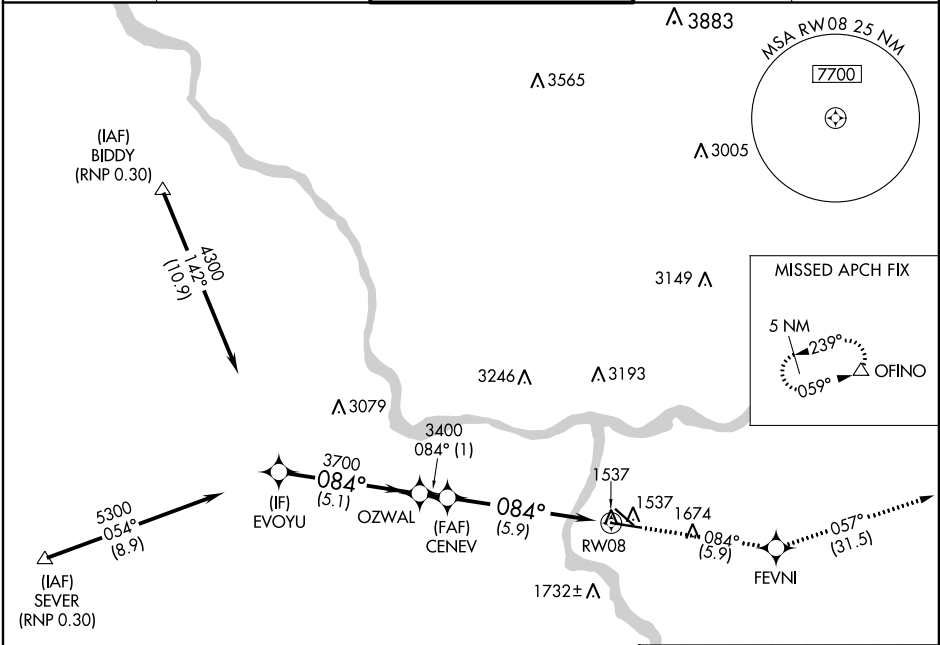
⚠

GPS required. For uncompensated Baro-VNAV systems, procedure NA below -16°C (3°F) or above 46°C (115°F). When VGSI inop, procedure NA at night.

MISSED APPROACH:

Climb to 6000 via track 084° to FEVNI and via track 057° to OFINO and hold.

ASOS 135.575	SEATTLE CENTER 123.95 290.55	LEWISTON TOWER ★ 119.4 (CTAF) 0 318.8	GND CON 121.9	UNICOM 122.95
-----------------	---------------------------------	--	------------------	------------------



Procedure NA for arrivals at SEVER via V187 westbound.

ELEV 1442

TDZE 1440

VGSI and RNAV glidepath not coincident (VGSI Angle 3.00°/TCH 45°).

EVOYU	OZWAL	CENEV	RW08
4300	3700	3400	
GP 3.00° TCH 55°			
5.1 NM 1 NM 5.9 NM			

6000

FEVNI

OFINO

CATEGORY	A	B	C	D
RNP 0.30 DA	1752-1 312 (400-1)			

AUTHORIZATION REQUIRED