

20310

RNAV (RNP) Z RWY 26
LEWISTON-NEZ PERCE COUNTY (LWS)

MISSED APPROACH: Climb to 7000 on track 264° to CENEV and on track 246° to SEVER and hold, continue climb-in-hold to 7000.

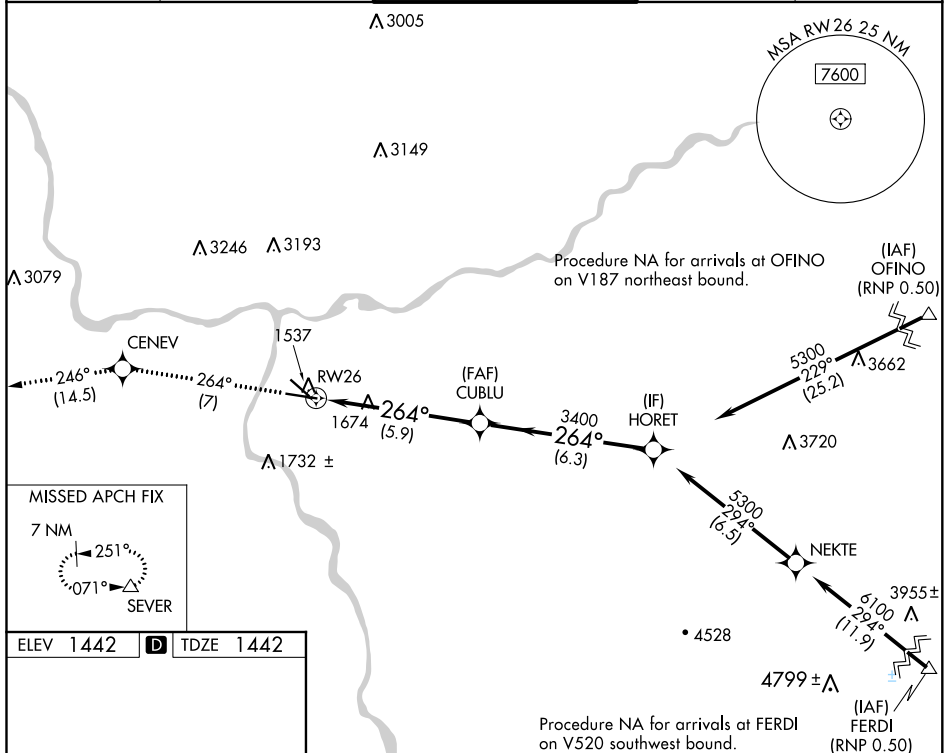
UNICOM
122.95

Diagram illustrating the TWR 1537 area, showing the intersection of REIL Rwy 8, REIL Rwy 12, HIRL Rwy 8-26, and MIRL Rwy 12-30. The diagram includes a 1.4% UP slope, a 3003 X 75 dimension, a 6511 X 150 dimension, and a 264° to RW26 direction.

7000 ↑ tr 264°	CENEV ✦	tr 246°	SEVER △	VGS1 and RNAV glidepath not coincident (VGS1 Angle 3.00/TCH 51).		HORET
				CUBLU 3400 264° 5300 GP 3.00° TCH 51		
CATEGORY	A		B	C		D
RNP 0.20 DA	1806-¾		364 (400-¾)			
RNP 0.30 DA	2003-1½		561 (600-1½)			
AUTHORIZATION REQUIRED						

LEWISTON-NEZ PERCE COUNTY (LWS)
RNAV (RNP) Z RWY 26