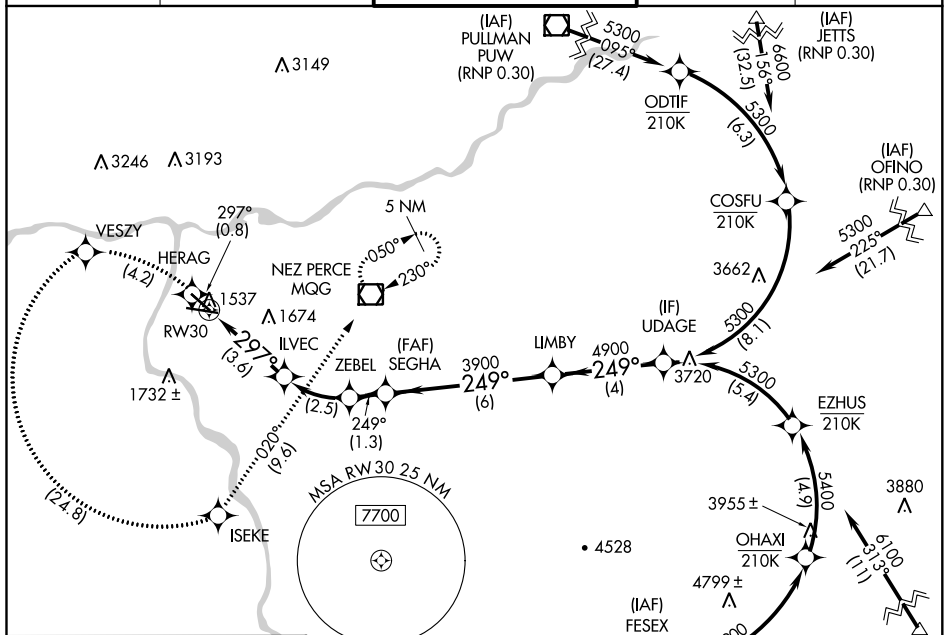


RNAV (RNP) RWY 30

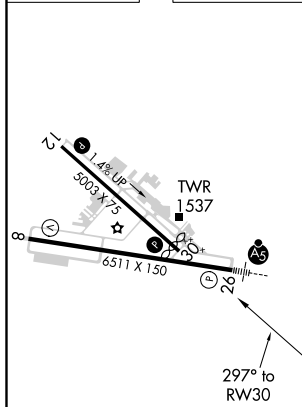
LEWISTON-NEZ PERCE COUNTY (LWS)

MISSED APPROACH: Climb to 6000 on track 297° to HERAG, left turn to VESZY, left turn to ISEKE and on track 020° to MQG VOR/DME and hold.

ASOS 135.575	SEATTLE CENTER 123.95 290.55	LEWISTON TOWER ★ 119.4 (CTAF) 0 318.8	GND CON 121.9	UNICOM 122.95
-----------------	---------------------------------	--	------------------	------------------



ELEV 1442	D	TDZE 1442
-----------	----------	-----------



8700
071°
(47.5)
WALLA WALLA
ALW
(RNP 0.30)
● 5400

(IAF) LESLE 073° (21.9)

(IAF) OXLEY (RNP 0.30) 6500 005° (20.7)

6000 ↑ tr 297°

HERAG

VESZY

ISEKE

MQG tr 020°

UDAGE Procedure Turn NA

SEGHA LIMBY

ILVEC 2646

ZEBEL 3468

3900

249°

5300

4900

3900

297°

RW30

3.6 NM

2.5 NM

1.3 NM

6 NM

4 NM

GP 3.00% TCH 47

CATEGORY	A	B	C	D
RNP 0.30 DA	1778-1½		336 (400-1½)	

AUTHORIZATION REQUIRED

REIL Rwy 8 **L**
REIL Rwy 12
HIRL Rwy 8-26
MIRL Rwy 12-30

LEWISTON, IDAHO
Orig-C 17AUG17

LEWISTON-NEZ PERCE COUNTY (LWS)
RNAV (RNP) RWY 30

46°22'N-117°01'W