

WAAS CH <b>82437</b> <b>W16A</b>	APP CRS <b>163°</b>	Rwy Idg <b>8203</b> TDZE <b>7289</b> Apt Elev <b>7289</b>
--	------------------------	---

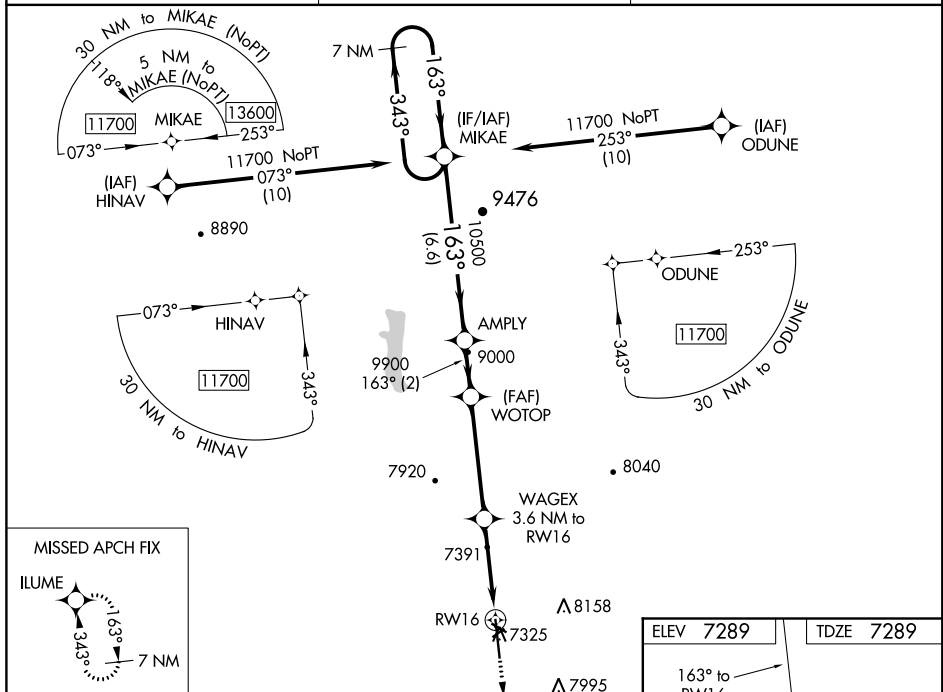
## RNAV (GPS) RWY 16

KEMMERER MUNI (EMM)

Baro-VNAV NA when using Evanston altimeter setting. For uncompensated Baro-VNAV systems, LNAV/VNAV NA below -27°C (-16°F) or above 54°C (130°F). DME/DME RNP-0.3 NA. VDP NA when using Evanston altimeter setting. Night landing: Rwy 4, 10, 22, 28 NA. When local altimeter setting not received, use Evanston altimeter setting: Increase all DA 111 feet and visibilities ¼ mile; increase all MDA 120 feet.

**MISSED APPROACH:**  
Climb to 10000 direct  
ILUME and hold.

AWOS-3PT <b>119.675</b>	SALT LAKE CITY CENTER <b>124.35 353.5</b>	UNICOM <b>122.8 (CTAF) 0*</b>
----------------------------	--	----------------------------------



NW-1, 03 DEC 2020 to 31 DEC 2020

7 NM Holding Pattern

MIKAE

11700

343°

163°

GP 3.00° TCH 34

AMPLY

10500

9900

WOTOP

9900

WAGEX 3.6 NM to RW16

\*8480

\*1 NM to RW16

\*RNAV only.

10000

ILUM

6.6 NM

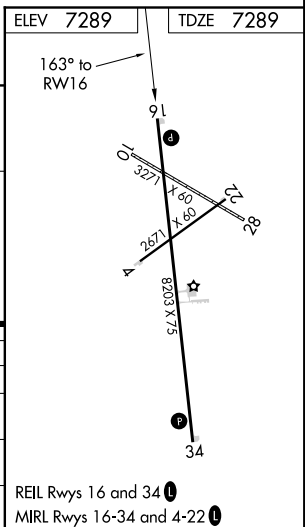
2 NM

4.5 NM

2.6 NM

1 NM

CATEGORY	A	B	C	D
LPV DA	7539-1	250 (300-1)		NA
RNAV/VNAV DA	7539-1	250 (300-1)		NA
RNAV MDA	7660-1	371 (400-1)		NA
<b>C</b> CIRCLING	7660-1 371 (400-1)	8240-1½ 951 (1000-1½)		NA



KEMMERER, WYOMING

Amdt 2 08JAN15

41°49'N-110°33'W

KEMMERER MUNI (EMM)

RNAV (GPS) RWY 16