




WAAS CH 90232 W19A	APP CRS 187°	Rwy Idg 6300 TDZE 6451 Apt Elev 6451
--	------------------------	---

RNAV (GPS) Z RWY 19
JACKSON HOLE (JAC)

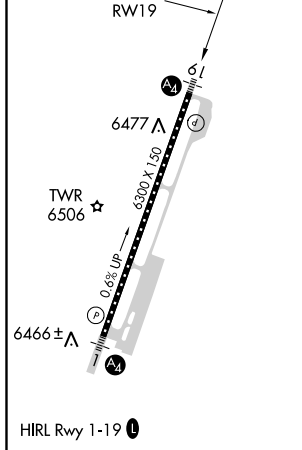
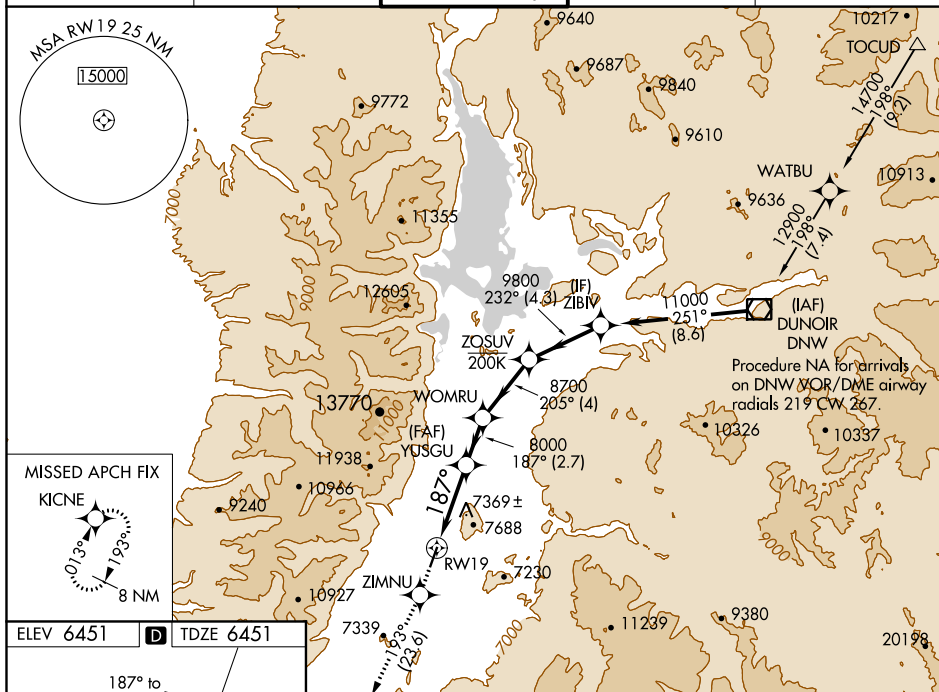
RNP APCH.

 Inop table does not apply to #LPV all Cats and LNAV Cats C and D. When local altimeter setting not received, procedure NA. For inop ALS, increase LPV visibility to 1½ SM. Circling NA east of Rwy 1-19.
 -21°C
 # Missed approach requires a minimum climb of 235 feet per NM to 9200.

MALS

MISSED APPROACH: Climb to 14000 direct ZIMNU and on track 193° to KICNE and hold, continue climb-in-hold to 14000.

ATIS★ 120.625	SALT LAKE CENTER 133.25 285.6	JACKSON TOWER★ 118.075 (CTAF) 0	GND CON 124.55	UNICOM 122.95
------------------	----------------------------------	------------------------------------	-------------------	------------------



14000 ↑	ZIMNU ✧	KICNE ✧ tr 193°	YUSGU				WOMRU	ZOSUV	ZIBIV	
*LNAV only.			*2.8 NM to RW19		8000		187°	205°	232°	11000
RW19			8000		8000		8700	9800	GP 3.00° TCH 50°	
2.8 NM			1.9 NM		2.7 NM		4 NM		4.3 NM	
CATEGORY		A		B		C		D		
LPV	DA#			6651/40		200 (200-¾)				
LPV	DA			6908/55		457 (500-1)				
LNAV	MDA	7380/55		929 (1000-1)		7380-2½		929 (1000-2½)		
CIRCLING		7380-1¼		929 (1000-1¼)		7380-2¾ 929 (1000-2¾)		7380-3 929 (1000-3)		

JACKSON HOLE (JAC)
RNAV (GPS) Z RWY 19