

WAAS CH 99337 W32A	APP CRS 319°	Rwy Idg TDZE Apt Elev	5300 3851 3858
--	------------------------	-----------------------------	---

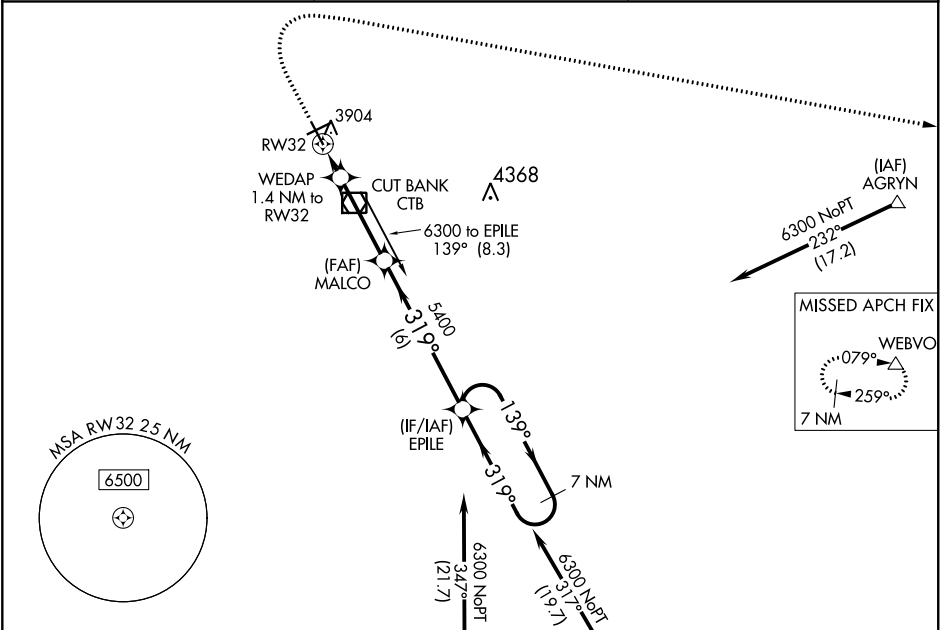
RNAV (GPS) RWY 32
CUT BANK INTL (CTB)

⚠

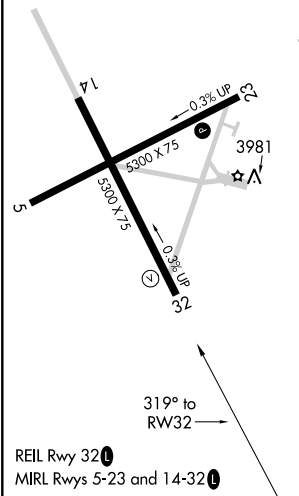
For uncompensated Baro-VNAV systems, LNAV/VNAV NA below -25°C (-13°F) or above 51°C (124°F).
DME/DME RNP-0.3 NA.

MISSED APPROACH: Climb to 4400 then climbing right turn to 11000 direct WEBVO and hold.

ASOS 119.025	SALT LAKE CITY CENTER 133.4 285.4	UNICOM 123.0 (CTAF) 0
------------------------	---	---------------------------------



ELEV 3858	TDZE 3851
-----------	-----------



4400	11000	WEBVO	VGSI and RNAV glidepath not coincident (VGSI Angle 3.00/TCH 42).		7 NM Holding Pattern
*LNAV only		WEDAP 1.4 NM to RWY32	MALCO 5400	319°	6300
0.8 NM to RWY32		4320	5400	139°	GP 3.00° TCH 53
-0.8 NM - 0.6 NM - 3.3 NM - 6 NM					
CATEGORY	A	B	C	D	
LPV DA		4051-1	200 (200-1)		
LNAV/VNAV DA		4101-1	250 (300-1)		
LNAV MDA		4160-1	309 (400-1)		
CIRCLING	4280-1 422 (500-1)	4320-1 462 (500-1)	4400-1½ 542 (600-1½)	4620-2½ 762 (800-2½)	

NW-1, 03 DEC 2020 to 31 DEC 2020

NW-1, 03 DEC 2020 to 31 DEC 2020