

VOR/DME PSC 109.8 Chan 35	APP CRS 217°	Rwy Idg 7110 TDZE 404 Apt Elev 410
---	------------------------	---

VOR RWY 21R
TRI-CITIES (PSC)

DME required.

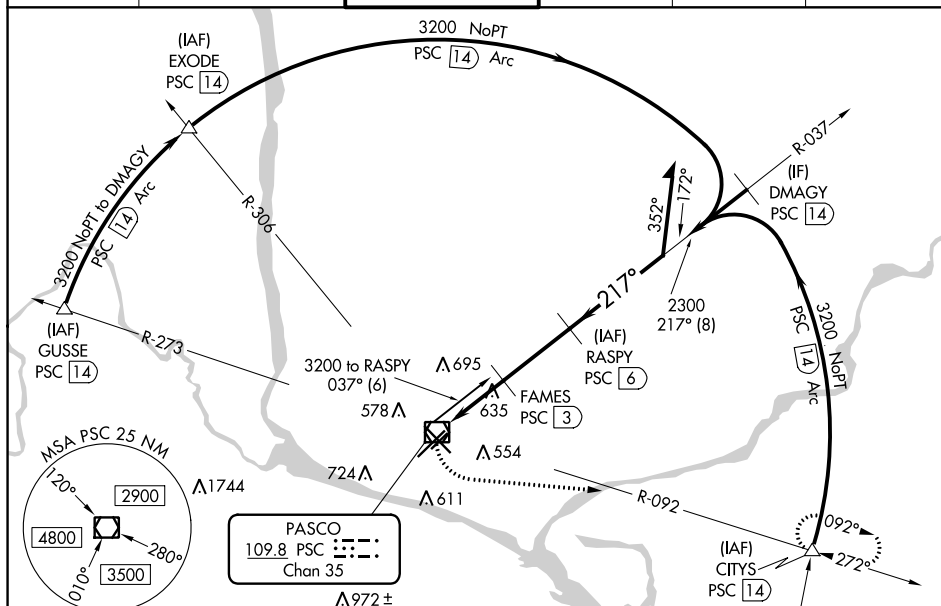
A VDP NA when using Hermiston altimeter setting. When local altimeter setting not received, use Hermiston altimeter setting and increase all MDA 100 feet and increase S-21R Cat C/D visibility $\frac{3}{8}$ SM and Circling Cat C/D visibility $\frac{1}{4}$ SM. For Inop ALS when using Hermiston altimeter setting, increase Cat C/D visibility to $1\frac{3}{4}$ SM.

MALSR

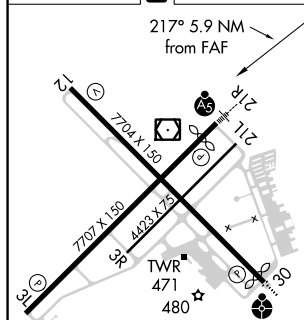


MISSED APPROACH: Climbing left turn to 3200 on heading 080° and PSC VOR/DME R-092 PSC VOR/DME to CITYS INT/PSC 14 DME and hold.

ATIS 125.65	CHINOOK APP CON★ 128.75 377.2	TRI-CITIES TOWER★ 135.3 (CTAF) 0 323.3	GND CON 121.8	CLNC DEL 120.0	UNICOM 122.95
----------------	----------------------------------	---	------------------	-------------------	------------------



ELEV	410	D	TDZE	404
------	-----	----------	------	-----



REIL Rwy 3L and 12
MIRL Rwy 12-30 (L)
HIRL Rwy 3L-21R (L)

3200 hdg 080°	PSC R-092	CITYS △	RASPY PSC [6] <div>Remain within 10 NM</div>	
PSC VOR/DME <div> PSC 1.5 FAMES PSC 3 TCH 54 2.95° </div>			3200	2300
1360 1.4 NM 1.5 NM 3 NM				
CATEGORY	A	B	C	D
S-21R	940/24	536 (600-½)	940/55	536 (600-1)
CIRCLING	940-1	530 (600-1)	1040-1¼ 630 (700-1¼)	1100-2¼ 690 (700-2¼)