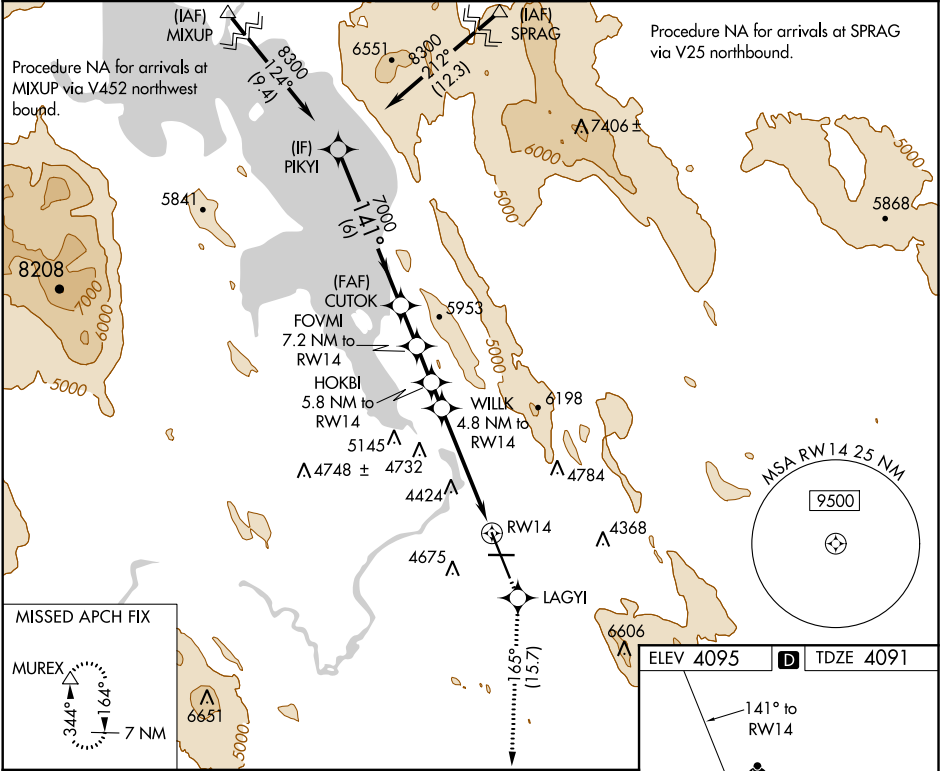


WAAS CH 58001 W14A	APP CRS 141°	Rwy Idg 10302 TDZE 4091 Apt Elev 4095
--	------------------------	--

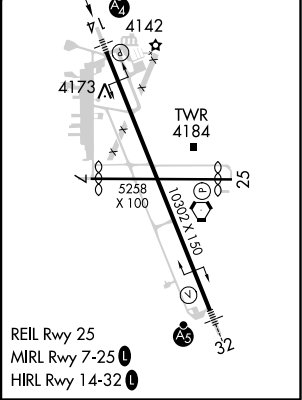
RNAV (GPS) RWY 14
CRATER LAKE-KLAMATH RGNL (LMT)

<div><div></div><div></div></div> <div>Inop table does not apply to LPV all Cats, and LNAV Cats B and C. DME/DME RNP-0.3 NA. Helicopter visibility reduction below ¾ SM NA. Circling NA for Cat D east of Rwy 14-32.</div>	<div><div></div><div></div></div> <div>MALSF</div>	MISSED APPROACH: Climb to 9300 direct LAGYI and via track 165° to MUREX and hold, continue climb-in-hold to 9300.
--	--	---

ATIS 126.5 263.0	KINGSLEY APP CON 123.675 270.8	KINGSLEY TOWER★ 133.975 (CTAF) 0 257.8	GND CON 121.9 348.6	UNICOM 122.95
----------------------------	--	--	-------------------------------	-------------------------



PIKYI		CUTOK		FOVMI 7.2 NM to RW14		HOKBI 5.8 NM to RW14		WILLK 4.8 NM to RW14		LAGYI ↑ tr 165°		MUREX △	
8300		7000		*6480		*6000		*5680		*LNAV only.			
Procedure Turn NA		GP 3.00° TCH 50		6 NM		1.6 NM		1.4 NM		1 NM		2.3 NM	
2.5 NM													
CATEGORY		A		B		C		D					
LPV DA		4635-2 544 (600-2)											
LNAV MDA		4920-¾ 829 (900-¾)		4920-1¼ 829 (900-1¼)		4920-2½ 829 (900-2½)		4920-2¾ 829 (900-2¾)					
CIRCLING		4920-1 825 (900-1)		4980-1¼ 885 (900-1¼)		5420-3 1325 (1400-3)		5660-3 1565 (1600-3)					



NW-1, 03 DEC 2020 to 31 DEC 2020

NW-1, 03 DEC 2020 to 31 DEC 2020