

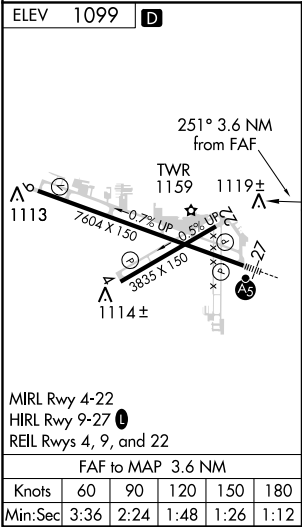
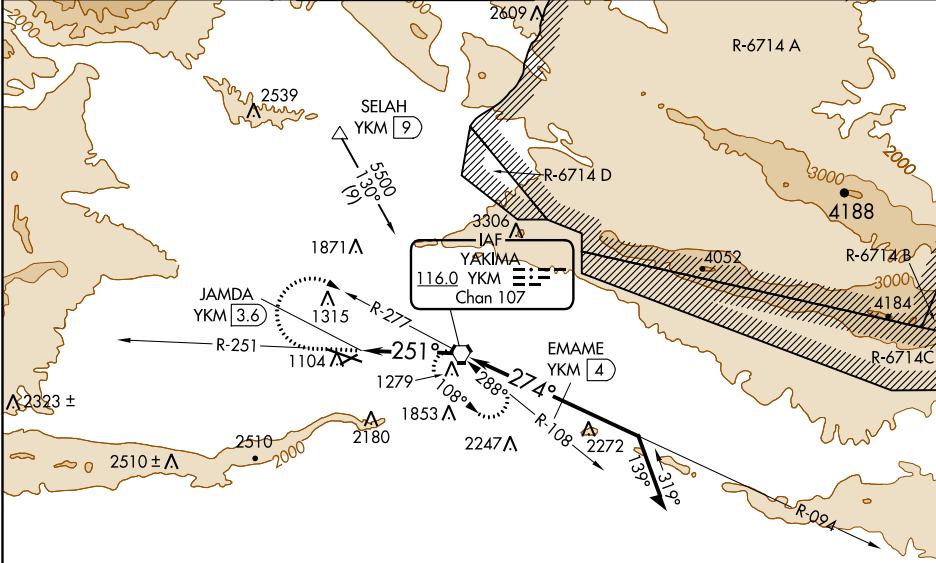
VORTAC YKM 116.0 Chan 107	APP CRS 251°	Rwy Idg TDZE Apt Elev N/A 1099
---	------------------------	--

VOR-A

YAKIMA AIR TERMINAL/MCALLISTER FIELD (YKM)

<p>V DME required. A Circling not authorized south of Rwy 9-27. When local altimeter setting not received, procedure NA.</p>	<p>MISSED APPROACH: Climb to 2600 via YKM VORTAC R-251 then climbing right turn to 4600 via YKM VORTAC R-277 to YKM VORTAC and hold, continue climb-in-hold to 4600.</p>
--	--

ATIS 125.25	CHINOOK APP CON★ 123.8 263.15	YAKIMA TOWER★ 133.25 (CTAF) 0 257.8	GND CON 121.9	CLNC DEL 121.9	UNICOM 122.95
-----------------------	---	---	-------------------------	--------------------------	-------------------------



<div><div><div>2600</div><div>↑</div><div>YKM R-251</div></div><div><div>4600</div><div>↷</div><div>YKM R-277</div></div><div><div>YKM</div><div>⬡</div></div></div> <div><div>YKM VORTAC</div><div>10000</div><div>094°</div><div>Remain within 10 NM</div><div>JAMDA</div><div>YKM 3.6</div><div>EMAME</div><div>YKM 4</div><div>251°</div><div>2800</div><div>274°</div><div>3300</div><div>4500</div><div>3.6 NM</div><div>4 NM</div></div>				
CATEGORY	A	B	C	D
<div><div>CIRCLING</div><div>1840-1</div><div>741 (800-1)</div></div>	<div><div>1840-1¼</div><div>741 (800-1¼)</div></div>	<div><div>1940-2½</div><div>841 (900-2½)</div></div>	<div><div>2280-3</div><div>1181 (1200-3)</div></div>	