

WAAS CH 90512 W27A	APP CRS 274°	Rwy Idg TDZE Apt Elev	7604 1068 1099
--	------------------------	-----------------------------	---

RNAV (GPS) X RWY 27
YAKIMA AIR TERMINAL/MCALLISTER FIELD (YKM)

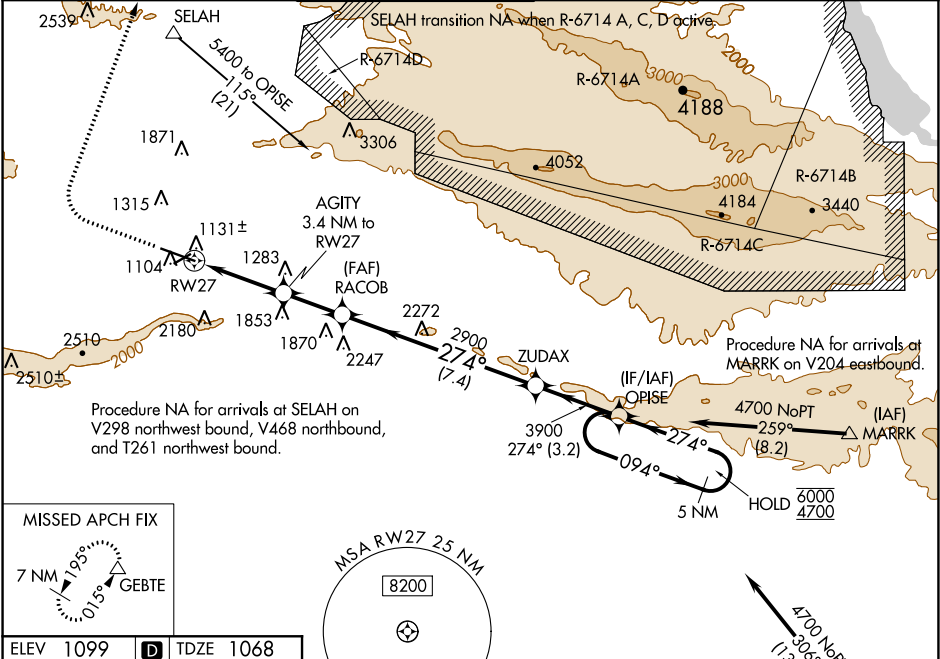
RNP APCH.

▼ Circling NA south of Rws 9 and 27.
▲ For inop ALS, increase LPV all Cats visibility to 1¾ SM.
*RVR 1800 authorized with use of FD or AP or HUD to DA.

MALSR
AS

MISSED APPROACH: Climb to 2100 then climbing right turn to 7000 direct GEBTE and hold. Continue climb-in-hold to 7000. *Missed approach requires minimum climb of 300 feet per NM to 3700. #Missed approach requires minimum climb of 300 feet per NM to 4900.

ATIS 125.25	CHINOOK APP CON★ 123.8 263.15	YAKIMA TOWER★ 133.25 (CTAF) 257.8	GND CON 121.9	CLNC DEL 121.9	UNICOM 122.95
-----------------------	---	---	-------------------------	--------------------------	-------------------------



ELEV 1099	D	TDZE 1068
-----------	---	-----------

MIRL Rwy 4-22
HIRL Rwy 9-27
REIL Rws 4, 9, and 22

TWR 1159
1119±
1113
7604 X 150
3835 X 150
1114±
274° to RW27

2100 7000 GEBTE

*LNAV only
*0.9 NM to RW27

AGITY 3.4 NM to RW27

RACOB 2900

ZUDAX 2900

OPISE 5 NM Holding Pattern
094° 6000
274° 4700

GP 3.00°
TCH 57

CATEGORY	A	B	C	D
LPV DA*	1268/24 200 (200-½)			
LPV DA	1668-1¼ 600 (600-1¼)			
LNAV MDA#	1400/24	332 (400-½)	1400/26	332 (400-½)
LNAV MDA	1720/24	652 (700-½)	1720-1¾	652 (700-1¾)
CIRCLING	1720-1	621 (700-1)	1880-2¼ 781 (800-2¼)	2280-3 1181 (1200-3)

NW-1, 03 DEC 2020 to 31 DEC 2020

NW-1, 03 DEC 2020 to 31 DEC 2020