

APP CRS
274°

Rwy Idg
TDZE
1068

Apt Elev
1099

RNAV (RNP) Z RWY 27

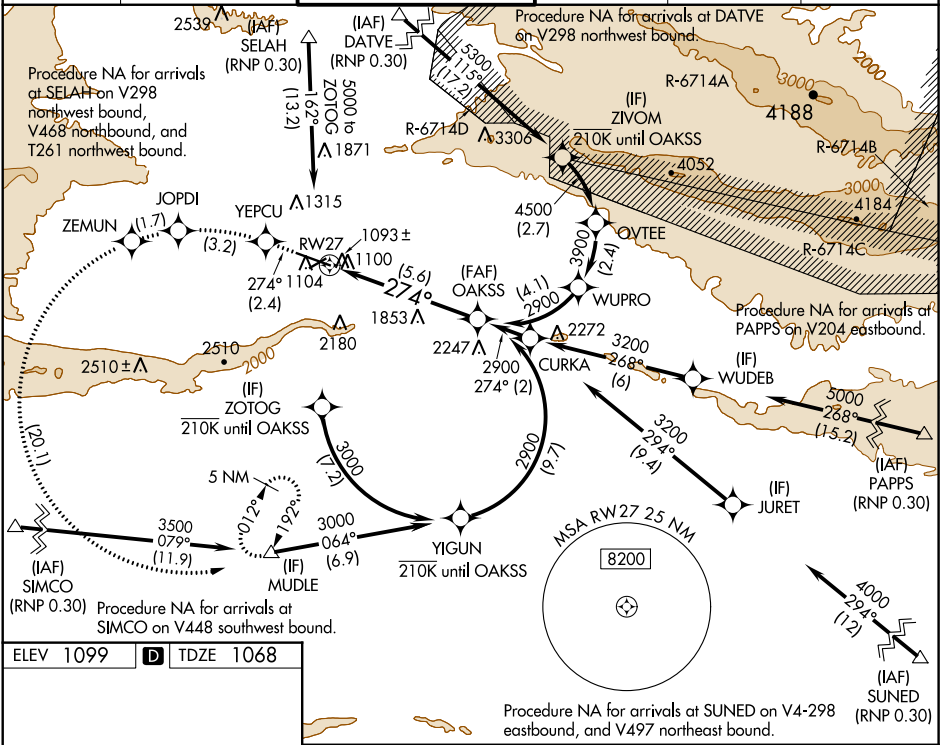
YAKIMA AIR TERMINAL/MCALLISTER FIELD (YKM)

For uncompensated Baro-VNAV systems, procedure NA below -17°C (2°F) or above 54°C (130°F). RF required. Missed approach requires RNP less than 1.0. For inop ALS increase *RNP 0.10 DA visibility all Cts to RVR 4500 and RNP 0.30 DA visibility all Cts to 1 1/2 SM. DATVE transition NA when R-6714 A, C, D active.

MALSR

MISSED APPROACH: Climb to 5100 on track 274° to YEPCU left turn to JOPDI left turn to ZEMUN left turn to MUDLE and hold.
* Missed approach requires a minimum climb of 215 feet per NM to 4300.

ATIS 125.25	CHINOOK APP CON * 123.8 263.15	YAKIMA TOWER * 133.25 (CTAF) 0 257.8	GND CON 121.9	CLNC DEL 121.9	UNICOM 122.95
----------------	-----------------------------------	-----------------------------------------	------------------	-------------------	------------------



ELEV 1099

D

TDZE 1068

5100

YEPCU

↑

tr 274°

5100

JOPDI

↶

5100

ZEMUN

↶

5100

MUDLE

△

2900

OAKSS

↶

See planview for multiple IF locations.

274°

2900

GP 3.00°

TCH 57

5.6 NM

CATEGORY	A	B	C	D
RNP 0.10 DA*	1348/24 280 (300-1/2)			
RNP 0.30 DA	1468/45 400 (400-7/8)			

AUTHORIZATION REQUIRED