

APP CRS	Rwy Idg	7604
094°	TDZE	1099
	Api Elev	1099

RNAV (RNP) RWY 9

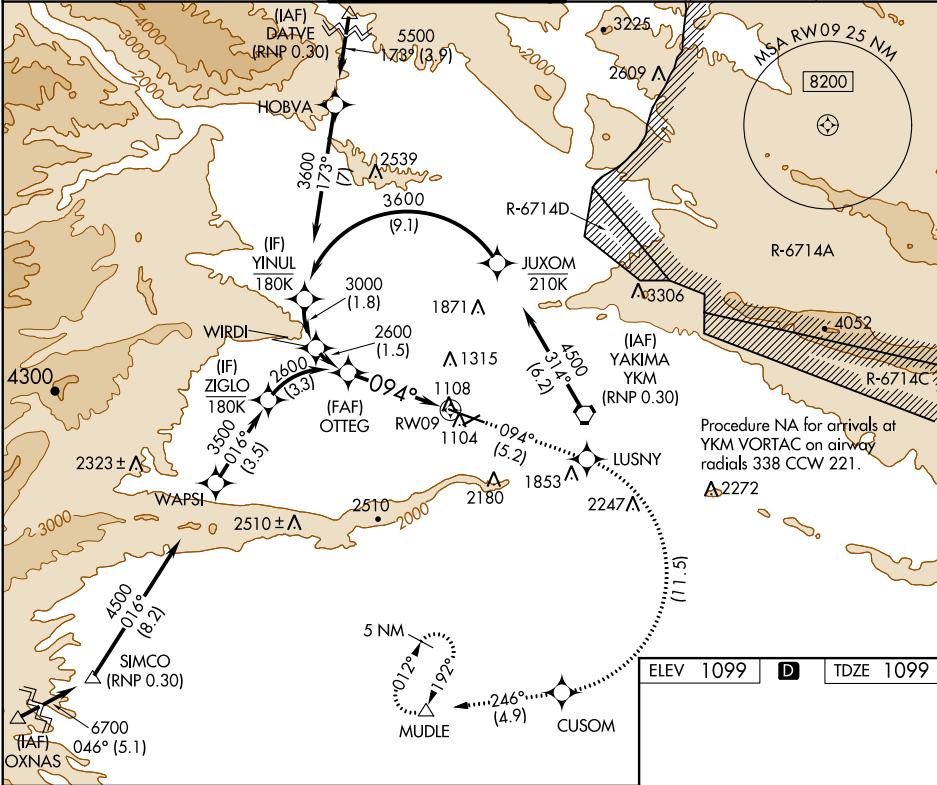
YAKIMA AIR TERMINAL/MCALLISTER FIELD (YKM)

RF required. GPS required. For uncompensated Baro-VNAV systems, procedure NA below -17°C (2°F) or above 45°C (113°F).

*** Missed approach requires a minimum climb of 425 feet per NM to 3000.**

MISSED APPROACH: Climb to 5100 on track 094° to LUSNY right turn to CUSOM and on track 246° to MUDLE and hold.

ATIS	CHINOOK APP CON *	YAKIMA TOWER *	GND CON	CLNC DEL	UNICOM
125.25	123.8 263.15	133.25 (CTAF) 0 257.8	121.9	121.9	122.95



OTTEG	5100	LUSNY	CUSOM	MUDLE
2600	tr 094°		tr 246°	

VGSI and RNAV glidepath not coincident (VGSI Angle 3.00/TCH 50).

2600
GP 3.50°
TCH 57

094°

See planview for multiple IF locations.

3.9 NM

CATEGORY	A	B	C	D
RNP 0.30 DA*	1473-1 374 (400-1)			NA
RNP 0.30 DA	1934-2½ 835 (900-2½)			NA

AUTHORIZATION REQUIRED

ELEV 1099 **D** TDZE 1099

094° to RWY 09

TWR 1159 1119±

1113 7604 X 150 0.7% UP 0.5% UP 3835 X 150 1114±

MRL Rwy 4-22
HRL Rwy 9-27 **0**
REIL Rws 4, 9, and 22

NW-1, 03 DEC 2020 to 31 DEC 2020

NW-1, 03 DEC 2020 to 31 DEC 2020