

OAK HARBOR, WASHINGTON

ILS or LOC/DME RWY 14

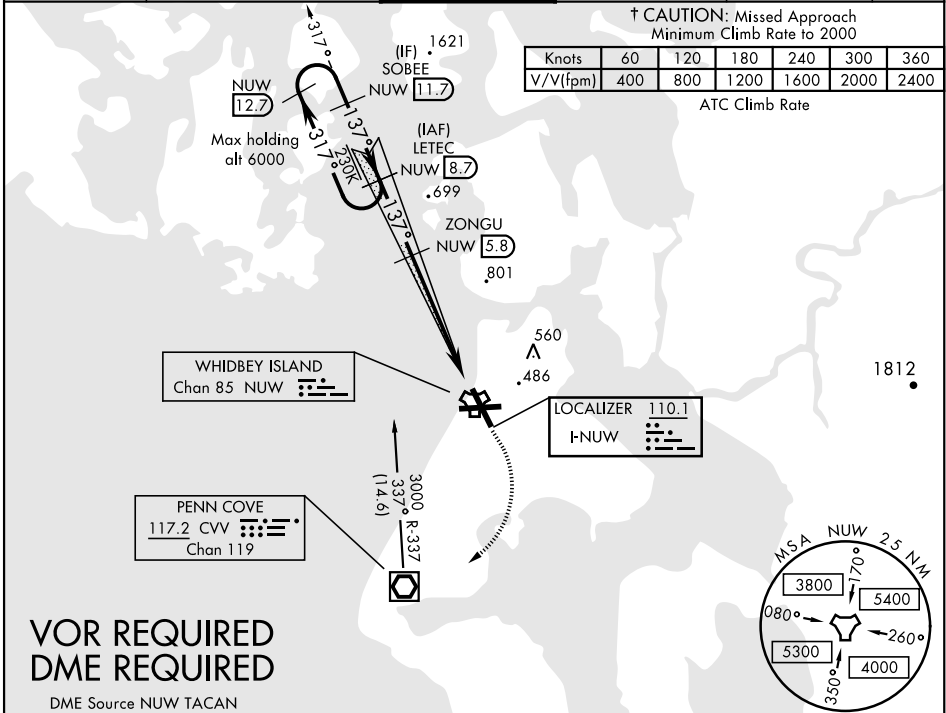
LOC I-NUW 110.1	APCH CRS 137°	Rwy ldg 8000 TDZE 39 Arpt Elev 47
---------------------------	-------------------------	--

AL-451 [USN]

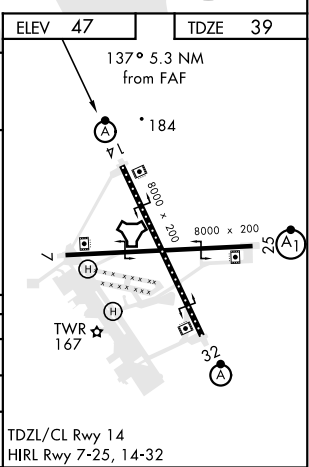
WHIDBEY ISLAND NAS (AULT FLD) (KNUW)

<p>▼ * When ALS inop, increase vis to ¾ mile. ** When ALS inop, increase CAT AB vis to 1 mile; CAT CDE vis to 1½ miles.</p>	<p>ALS-F-2</p>	<p>† MISSED APPROACH: Climb to 2000 via hdg 137°, then climbing right turn to 3000, direct CVV VOR/DME, then via CVV R-337 to LETEC and hold.</p>
---	----------------	---

<p>ATIS 134.15 281.5</p>	<p>WHIDBEY APP CON 120.7 270.8 118.2 285.65 EAST WEST</p>	<p>WHIDBEY TOWER 127.9 340.2</p>	<p>GND CON 121.75 336.4</p>	<p>CLNC DEL 135.1 379.9</p>	<p>ASR/PAR</p>
-------------------------------------	---	---	--	--	----------------



<p>SOBEE (12.7) SOBEE (11.7) LETEC (8.7)</p> <p>3000 137° 2700 137° 2700 137°</p> <p>GS 3.00° TCH 51</p> <p>ZONGU (5.8)</p> <p>MEVRE (0.9)</p> <p>TACAN</p> <p>4.9 NM 0.5 NM</p>					
CATEGORY	A	B	C	D	E
S-ILS 14 *	239-½ 200 (200-½)				
S-LOC 14 **	420-½ 381 (400-½) 420-⅝ 381 (400-⅝)				
CIRCLING	700-1	800-1	900-2½	900-2¾	1200-3
	653 (700-1)	753 (800-1)	853 (900-2½)	853 (900-2¾)	1153 (1200-3)



OAK HARBOR, WASHINGTON

48°21'N-122°39'W

WHIDBEY ISLAND NAS (AULT FLD) (KNUW)

Amtr 3 21MAY20

ILS or LOC/DME RWY 14

NW-1, 03 DEC 2020 to 31 DEC 2020

NW-1, 03 DEC 2020 to 31 DEC 2020