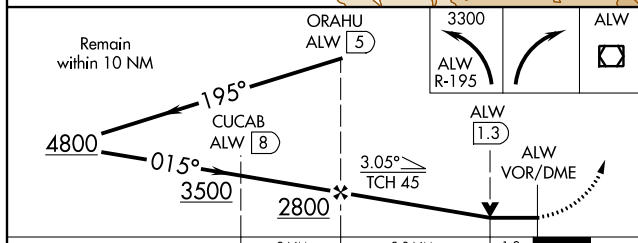
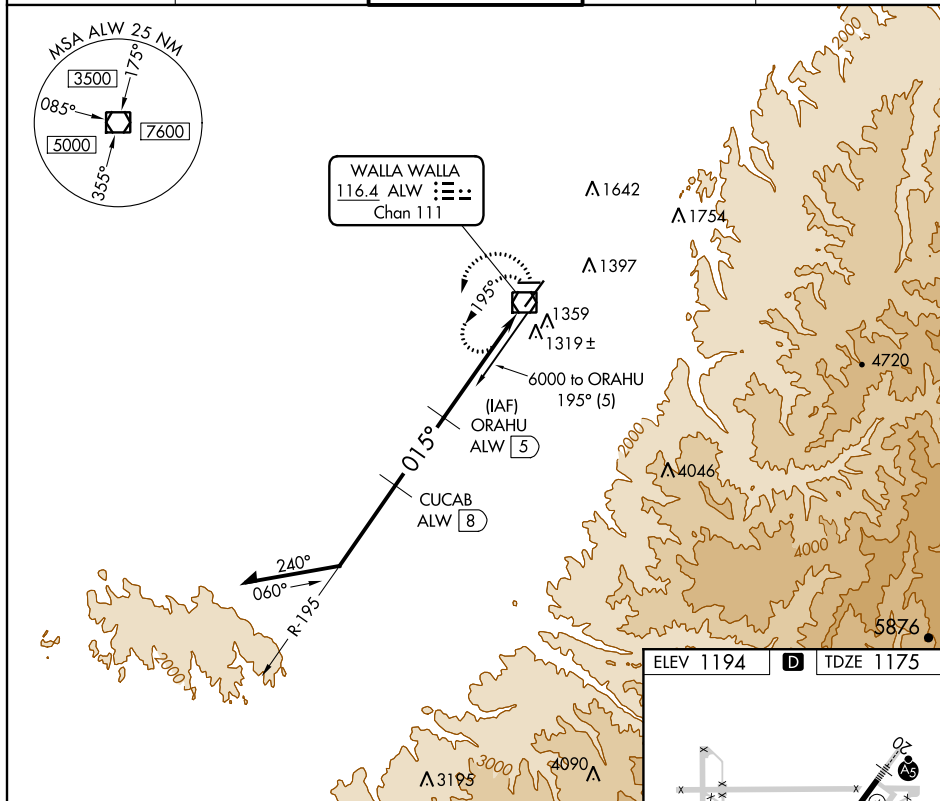


VOR/DME RWY 2  
WALLA WALLA RGNL (ALW)

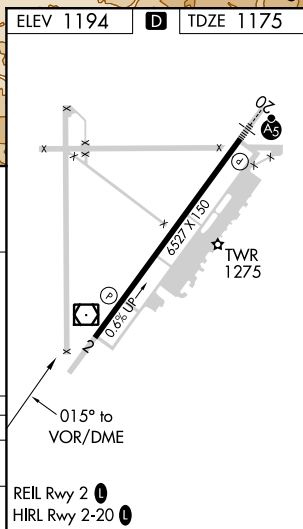


**MISSED APPROACH:** Climbing left turn to 3300 via ALW VOR/DME R-195 within 10 DME then turn right direct ALW VOR/DME and hold.

ASOS 135.875	CHINOOK APP CON ★ 133.15 379.15	WALLA WALLA TOWER ★ 118.5 (CTAF) 0 289.4	GND CON 121.6 289.4	UNICOM 122.95
-----------------	------------------------------------	---	------------------------	------------------



CATEGORY	A	B	C	D
S-2	1580-1	405 (400-1)	1580-1¼	405 (400-1¼)
CIRCLING	1720-1 526 (600-1)	1820-1 626 (700-1)	2080-2¾ 886 (900-2¾)	2240-3 1046 (1100-3)



NW-1, 03 DEC 2020 to 31 DEC 2020