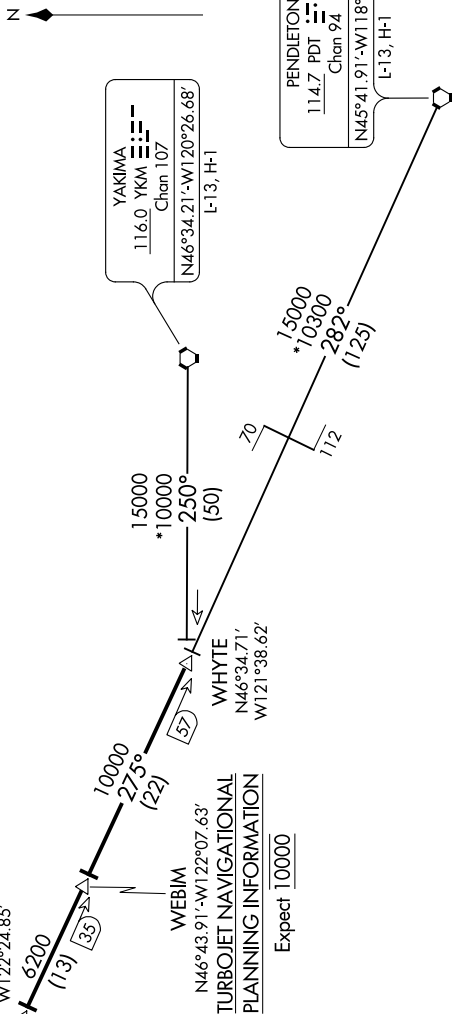


AL-414 (FAA)

RUNWAY 16: On OLM R-095 to OLM VORTAC, then on OLM R-015 to STEIL, expect ILS or LOC RWY 16 or TACAN RWY 16 approach.



NOTE: DME required.
NOTE: RADAR required.
NOTE: Chart not to scale.

TACOMA, WASHINGTON

MCCHORD FIELD (JOINT BASE LEWIS-MCCHORD) (KTCM)