
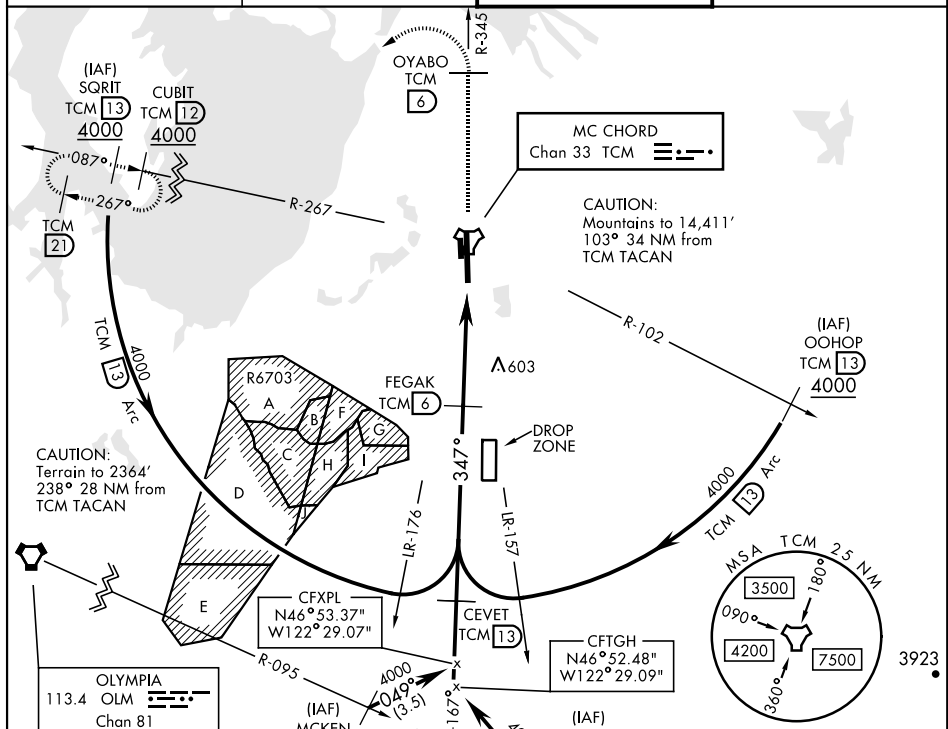


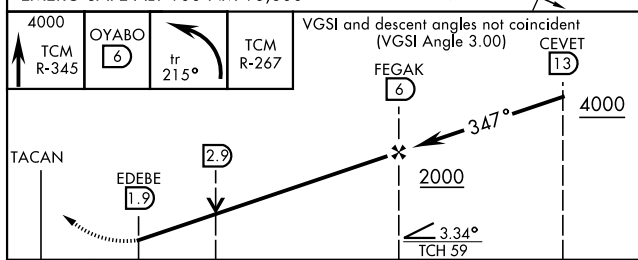
## TACAN RWY 34

|   |                         |  |   |   |
|---|-------------------------|--|---|---|
| TACAN TCM<br>Chan <b>33</b>   | APCH CRS<br><b>347°</b> | Rwy Idg <b>10,108</b><br>TDZE <b>322</b><br>Arpt Elev <b>322</b> | AL-414 [USAF]   | MC CHORD FIELD (KTCM)   |
| <b>▼ * When ALS inop, increase CAT AB RVR to 55, vis to 1 mile, CAT CD vis to 1 1/2 miles.</b><br><b>** Circling not authorized E of Rwy 16-34.</b> |                         |  | <b>ALS-F-2</b><br> | <b>MISSED APPROACH:</b> Climb to 4000 on TCM TACAN R-345 to OYABO, then turn left via 215° course to intercept TCM R-267 to CUBIT and hold. Cross OYABO at or above 3000. Continue climb in hold to 4000. |

|               |                 |               |                |
|---------------|-----------------|---------------|----------------|
| ATIS          | SEATTLE APP CON | MCCHORD TOWER | GND CON        |
| 135.825 270.1 | 126.5 377.15    | 124.8 259.3   | 118.175 279.65 |



EMERG SAFE ALT 100 NM 16,600



|             |        |             |                        |                      |
|-------------|--------|-------------|------------------------|----------------------|
|             | .5     | 4.1 NM      |                        |                      |
| CATEGORY    | A      | B           | C                      | D                    |
| S-34 *      | 860/24 | 538 (600-½) | 860/55                 | 538 (600-1)          |
| CIRCLING ** | 940-1  | 618 (700-1) | 940-1½<br>618 (700-1½) | 940-2<br>618 (700-2) |

