


ATIS
135.825 270.1
GND CON
118.175 279.65
MCCHORD TOWER
124.8 259.3
SEATTLE DEP CON
126.5 377.15

If unable to make ATC charted crossing
restriction advise ATC prior to departure.

RADAR REQUIRED

Maximum 250 KIAS

Radar vectors required within 10 NM after departure.

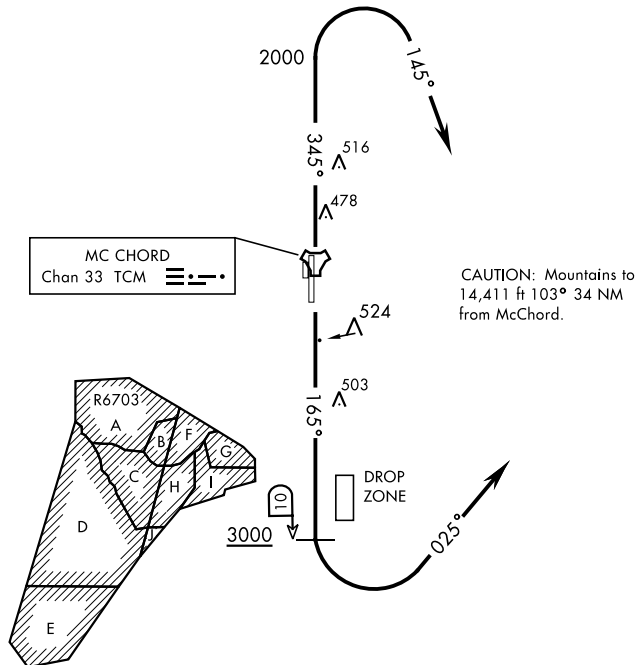


SEATTLE

116.8 SEA

Chan 115

L-1



DEPARTURE ROUTE DESCRIPTION

TAKE-OFF RWY 16: Climb on track 165° to cross TCM TACAN 10 DME at or above 3000. Then turn left tracking 025° to expect radar vectors. Maintain ATC assigned altitude.

TAKE-OFF RWY 34: Climb on track 345° to 2000, then turn right tracking 145° to expect radar vectors. Maintain ATC assigned altitude.

NW-1, 03 DEC 2020 to 31 DEC 2020

NW-1, 03 DEC 2020 to 31 DEC 2020