

## ILS or LOC RWY 34

LOC I-TCM <b><u>108.5</u></b>	APCH CRS <b>345°</b>	Rwy Idg <b>10,108</b> TDZE <b>322</b> Arpt Elev <b>322</b>
----------------------------------	-------------------------	--

AL-414 [USAF]

MC CHORD FIELD (KTCM)

RADAR or DME Required.

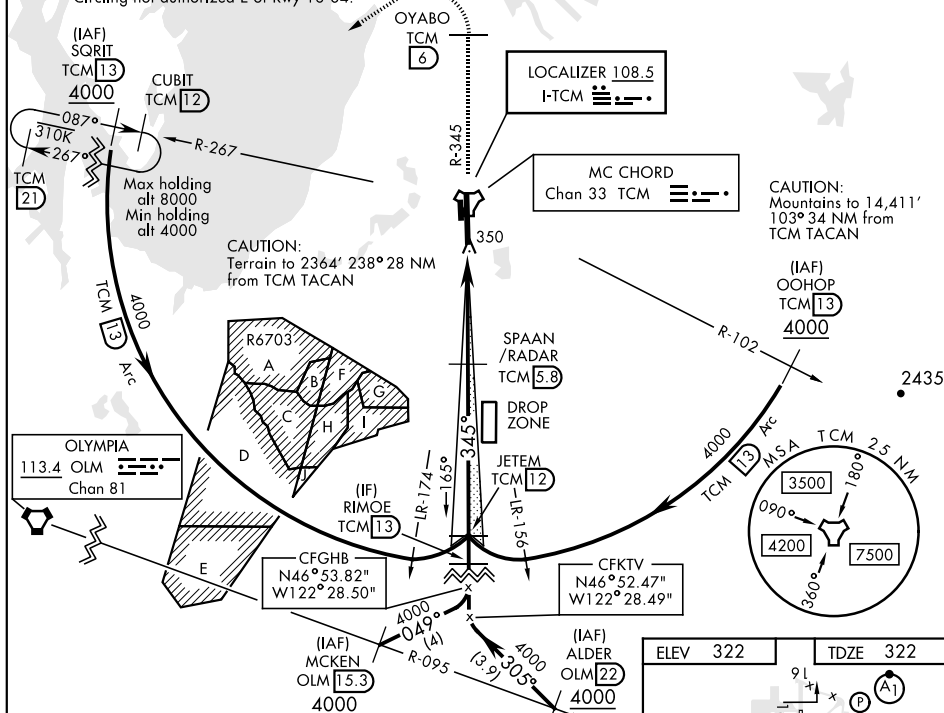
**T** \* When ALS inop, increase RVR to 40, vis to  $\frac{3}{4}$  mile.  
 \*\* When ALS inop, increase CAT AB RVR to 55, vis to 1 mile, CAT CD vis to  $1\frac{3}{8}$  miles.

ALSF-2

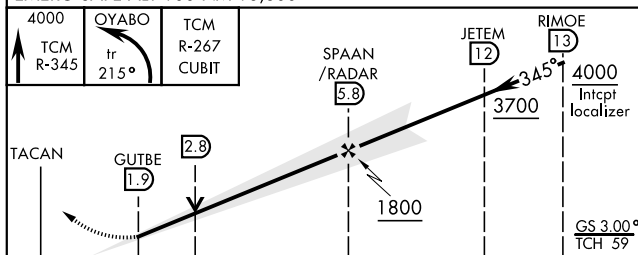
**MISSED APPROACH:** Climb to 4000 on TCM TACAN R-345 to OYABO, then turn left via 215° course to intercept TCM R-267 to CUBIT and hold, continue climb in hold to 4000. Cross OYABO at or above 3000.

ATIS	SEATTLE APP CON	MCCORD TOWER	GND CON
135.825 270.1	126.5 377.15	124.8 259.3	118.175 279.65

\*\*\* Circling not authorized E of Rwy 16-34.



EMERG SAFE ALT 100 NM 16.600



CATEGORY	A	B	C	D
S-LS 34 *	$\frac{522}{18}$		200	( $200-\frac{1}{2}$ )
S-LOC 34 **	820/24	498 ( $500-\frac{1}{2}$ )	820/50	498 ( $500-1$ )
CIRCLING ***	940-1	618 ( $700-1$ )	940- $\frac{13}{4}$ 618 $(700-\frac{1}{2})$	940-2 618 $(700-2)$

ELEV 322

TDZE 322

91

620

500

342

34

ASSAULT STRIP

TWR

461

345° 4.4 NM from FAF

TDZL/CL Rwy 34 HIRL Rwy 16-34

FAF to MAP 3.9 NM

Knots	60	90	120	150	180
Min:Sec	3:54	2:36	1:57	1:34	1:18

TACOMA, WASHINGTON

47°08'N-122°29'W

MC CHORD FIELD (KTCM)

Amdt 3 10SEP20

ILS or LOC RWY 34

NW-1, 03 DEC 2020 to 31 DEC 2020

NW-1, 03 DEC 2020 to 31 DEC 2020