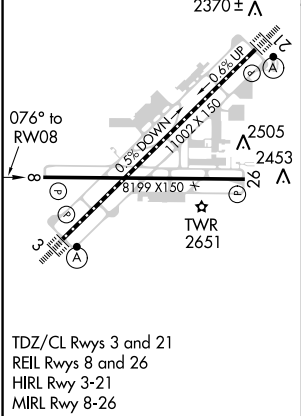
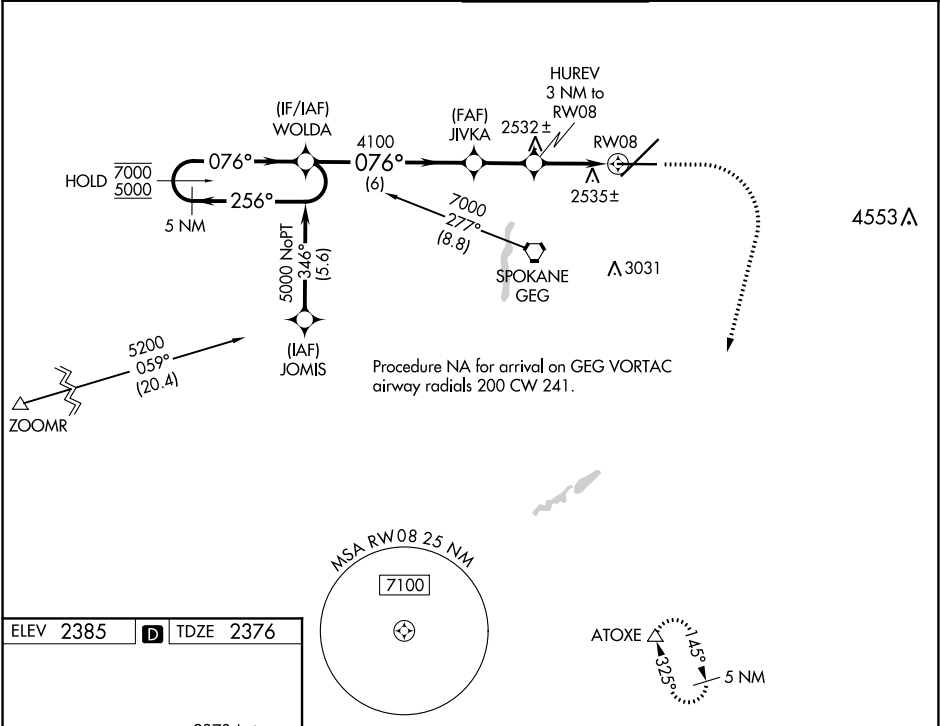


WAAS CH 48801 W08A	APP CRS 076°	Rwy Idg TDZE 8199 2376 Apt Elev 2385
--	------------------------	--

RNAV (GPS) Y RWY 8
SPOKANE INTL (GEG)

RNP APCH. ▼ For uncompensated Baro-VNAV systems, LNAV/VNAV NA below -18°C or above 52°C. ▲ MISSED APPROACH: Climb to 2900, then climbing right turn to 6000 direct ATOXE and hold.		SPOKANE APP CON 123.75 282.25 (205°-025°) 133.35 263.0 (026°-204°)		SPOKANE TOWER 118.3 278.3	GND CON 121.9 348.6	CLNC DEL 127.55
ATIS 124.325 254.375						



ELEV 2385		D	TDZE 2376
5 NM Holding Pattern		WOLDA	
7000		256°	
5000		076°	
GP 3.00°		TCH 60	
6 NM		2.1 NM	
1.8 NM		1.2	
CATEGORY	A	B	C
LPV DA	2576-¾	200 (200-¾)	
LNAV/VNAV DA	2834-1½	458 (500-1½)	
LNAV MDA	2800-1	424 (500-1)	2800-1¼ 424 (500-1¼)