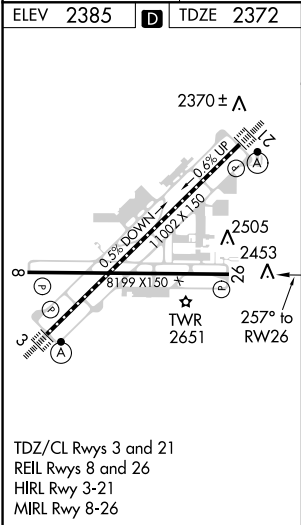
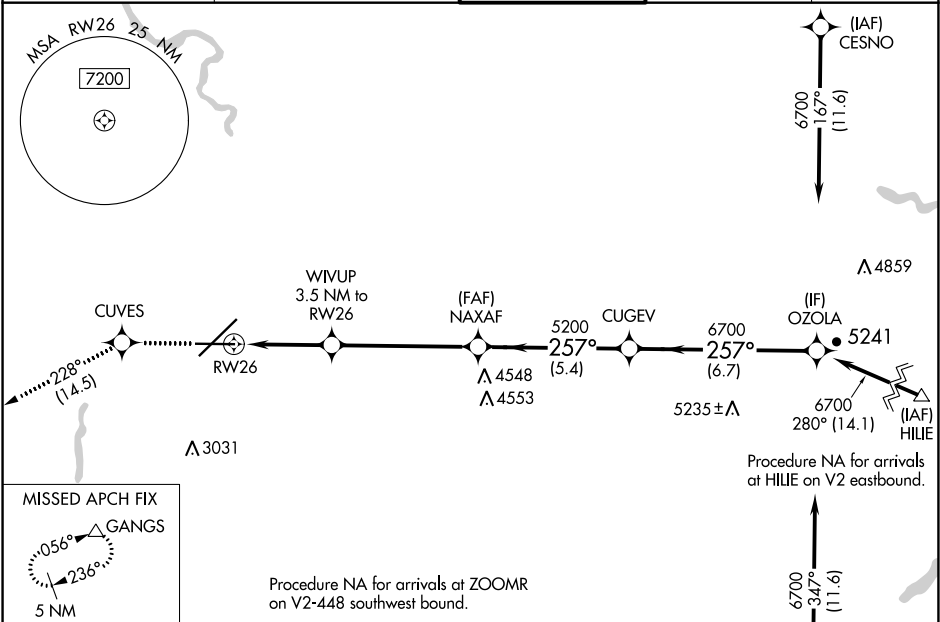


WAAS CH <b>93501</b> <b>W26A</b>	APP CRS <b>257°</b>	Rwy Idg TDZE Apt Elev	<b>8199</b> <b>2372</b> <b>2385</b>
--	------------------------	-----------------------------	---

RNAV (GPS) Y RWY 26

SPOKANE INTL (GEG)

RNP APCH. ▼ Rwy 26 helicopter visibility reduction below ¾ SM NA. ▲ For uncompensated Baro-VNAV systems, LNAV/VNAV NA below -18°C or above 54°C.		MISSED APPROACH: Climb to 5000 direct CUVES and on track 228° to GANGS and hold.		
ATIS <b>124.325 254.375</b>	SPOKANE APP CON <b>123.75 282.25</b> (205°-025°) <b>133.35 263.0</b> (026°-204°)	SPOKANE TOWER <b>118.3 278.3</b>	GND CON <b>121.9 348.6</b>	CLNC DEL <b>127.55</b>



ELEV <b>2385</b>	<b>D</b>	TDZE <b>2372</b>	ZOOMR 8000 076° (52.9)			
5000		CUVES	tr 228°	GANGS		
*LNAV only.		WIVUP 3.5 NM to RW26	NAXAF	CUGEV	OZOLA	
*1.6 NM to RW26		3520*	5200	6700	257°	6700
1.6 NM		1.9 NM	5.2 NM	5.4 NM	6.7 NM	GP 3.00° TCH 48
CATEGORY	A		B		C	
LPV DA			2688-1		316 (400-1)	
LNAV/VNAV DA			2911-1½		539 (600-1½)	
LNAV MDA	2920-1		548 (600-1)		2920-1½ 548 (600-1½)	
CIRCLING	2960-1 575 (600-1)		2980-1 595 (600-1)		3300-2¾ 915 (1000-2¾) 3400-3 1015 (1100-3)	