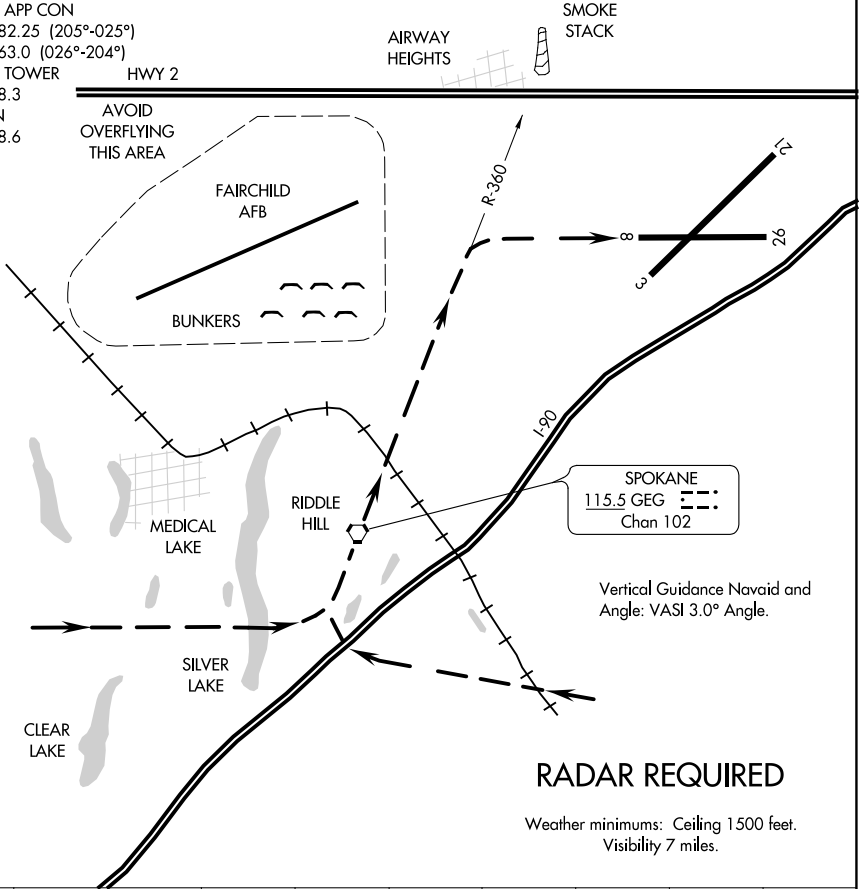


19003

RIDDLE HILL VISUAL RWY 8

AL-403 (FAA) SPOKANE INTL (GEG)
SPOKANE, WASHINGTON

ATIS
124.325 254.375
SPOKANE APP CON
123.75 282.25 (205°-025°)
133.35 263.0 (026°-204°)
SPOKANE TOWER
118.3 278.3
GND CON
121.9 348.6
CLNC DEL
127.55
UNICOM
122.950



1 NM	2	3	4	5	6	7	8	9
------	---	---	---	---	---	---	---	---

RIDDLE HILL VISUAL APPROACH RWY 8
PROCEDURE NOT AUTHORIZED AT NIGHT.

NW-1, 03 DEC 2020 to 31 DEC 2020

NW-1, 03 DEC 2020 to 31 DEC 2020