

LOC/DME I-OLJ <b>111.1</b> Chan <b>48</b>	APP CRS <b>031°</b>	Rwy Idg TDZE <b>2385</b> Apt Elev <b>2385</b>
-------------------------------------------------	------------------------	-----------------------------------------------------

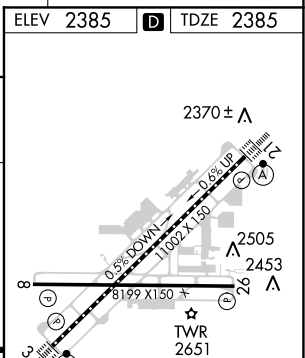
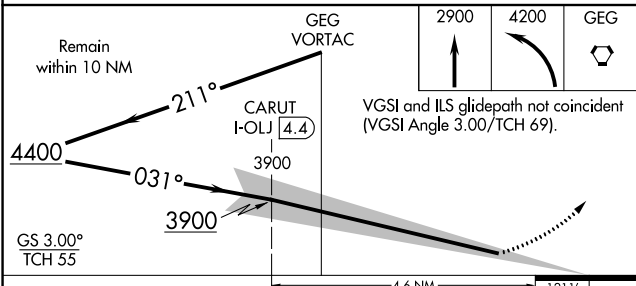
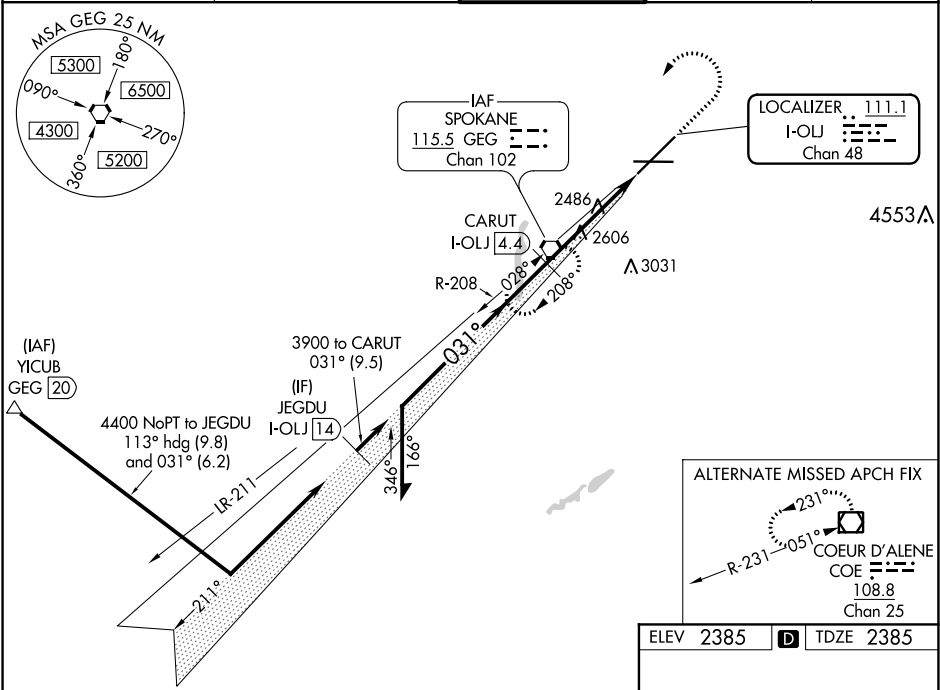
**ILS RWY 3 (CAT II & III)**  
SPOKANE INTL (GEG)

**⚠** CAT II: RVR 1000 authorized with specific OPSPEC, MSPEC, or LOA approval and use of autoland or HUD to touchdown.

ALSF-2

MISSED APPROACH: Climb to 2900 then climbing left turn to 4200 direct GEG VORTAC and hold.

ATIS <b>124.325 254.375</b>	SPOKANE APP CON <b>123.75 282.25</b> (205°-025°) <b>133.35 263.0</b> (026°-204°)	SPOKANE TOWER <b>118.3 278.3</b>	GND CON <b>121.9 348.6</b>	CLNC DEL <b>127.55</b>
--------------------------------	----------------------------------------------------------------------------------------	-------------------------------------	-------------------------------	---------------------------



CATEGORY	A	B	C	D
S-ILS 3	CAT II	RA 104/12	100	DA 2485
S-ILS 3	CAT III	RVR 03		

**CATEGORY II & III ILS - SPECIAL AIRCREW & AIRCRAFT CERTIFICATION REQUIRED**

TDZ/CL Rwy 3 and 21  
REL Rwy 8 and 26  
HIRL Rwy 3-21  
MIRL Rwy 8-26

NW-1, 03 DEC 2020 to 31 DEC 2020

NW-1, 03 DEC 2020 to 31 DEC 2020