

LOC/DME I-GEG 111.1 Chan 48	APP CRS 212°	Rwy Idg 11002 TDZE 2346 Apt Elev 2385
---	------------------------	--

ILS RWY 21 (SA CAT I)
SPOKANE INTL (GEG)

DME required.

TA

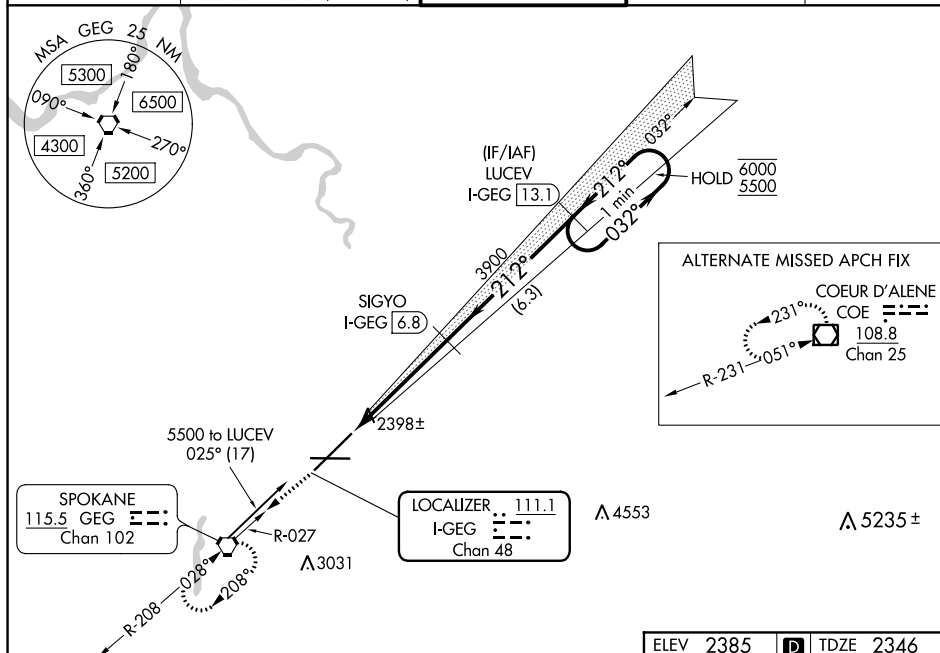
Requires specific OPSPEC, MSPEC, or LOA approval and use of HUD to DH.



ALSF-2



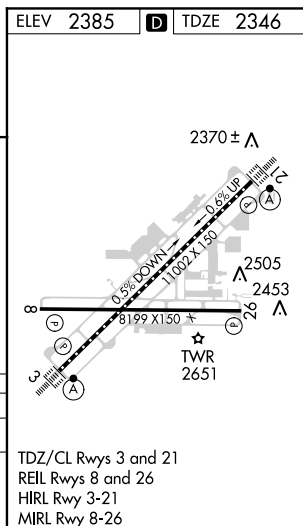
MISSED APPROACH: Climb to 4200 on GEG VORTAC R-027 to GEG VORTAC and hold.

ATIS 124.325 254.375	SPOKANE APP CON 123.75 282.25 (205°-025°) 133.35 263.0 (026°-204°)	SPOKANE TOWER 118.3 278.3	GND CON 121.9 348.6	CLNC DEL 127.55
-------------------------	--	------------------------------	------------------------	--------------------



4200 ↑ GEG R-027	GEG 	VGS1 and ILS glidepath not coincident (VGS1 Angle 3.00°/TCH 73).			
		SIGYO I-GEG 6.8	LUCEV I-GEG 13.1	One Minute Holding Pattern	
					
GS 3.00° TCH 55					
CATEGORY	A	B	C	D	
S-ILS 21	RA 197/14 126 DA 2472				

SA CATEGORY I ILS - SPECIAL AIRCREW
& AIRCRAFT CERTIFICATION REQUIRED



ILS RWY 21 (SA CAT I)