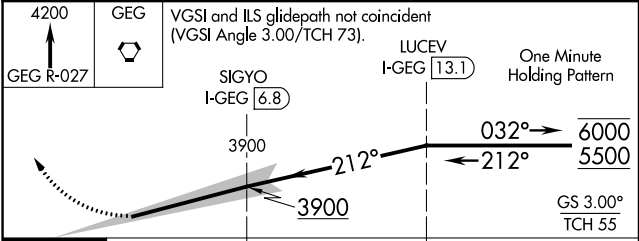
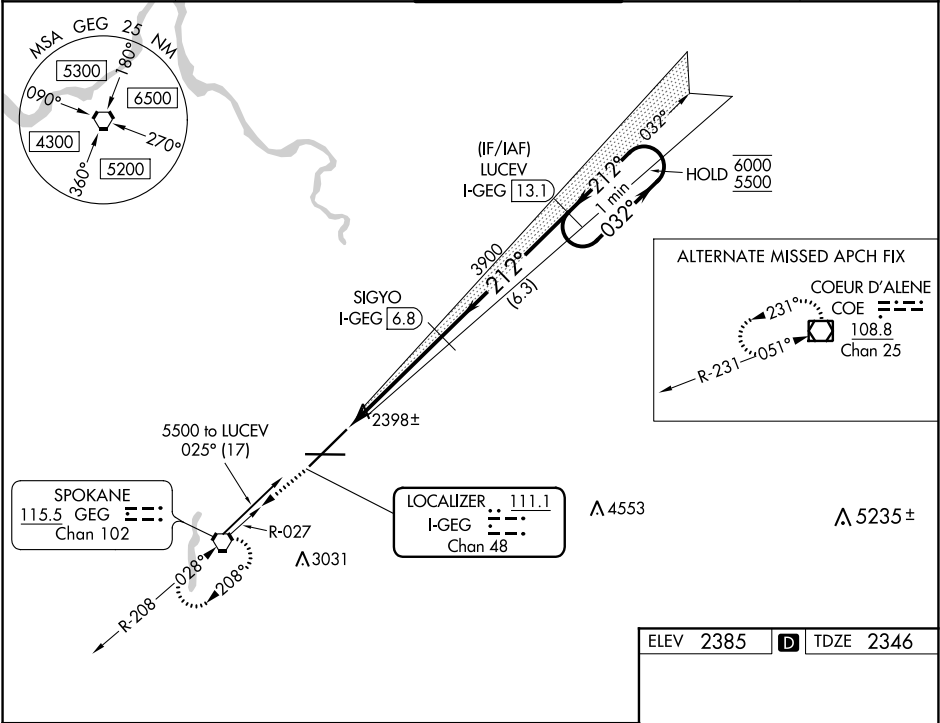


LOC/DME I-GEG	APP CRS	Rwy Idg	11002
111.1	212°	TDZE	2346
Chan 48		Apt Elev	2385

ILS RWY 21 (CAT II & III)
SPOKANE INTL (GEG)

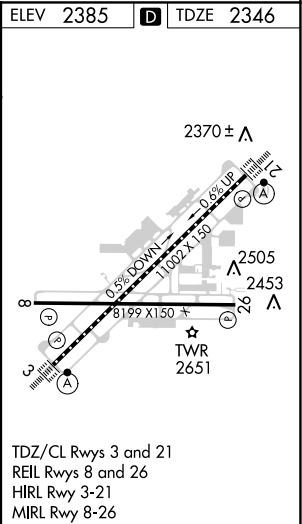
DME required.	ALSF-2	MISSED APPROACH: Climb to 4200 on GEG VORTAC R-027 to GEG VORTAC and hold.
CAT II: RVR 1000 authorized with specific OPSPEC, MSPEC, or LOA approval and use of autoland or HUD to touchdown.		

ATIS	SPOKANE APP CON	SPOKANE TOWER	GND CON	CLNC DEL
124.325 254.375	123.75 282.25 (205°-025°) 133.35 263.0 (026°-204°)	118.3 278.3	121.9 348.6	127.55



CATEGORY	A	B	C	D
S-ILS 21	CAT II	RA 147/12 76	DA 2422	
S-ILS 21	CAT III	RVR 03		

CATEGORY II & III ILS - SPECIAL AIRCREW
& AIRCRAFT CERTIFICATION REQUIRED



NW-1, 03 DEC 2020 to 31 DEC 2020

NW-1, 03 DEC 2020 to 31 DEC 2020