

LOC/DME I-FLZ	APP CRS	Rwy Idg	4499
111.7	221°	TDZE	1957
Chan 54		Apt Elev	1957

ILS or LOC RWY 22R
FELTS FIELD (SFF)

⚠ Inop table does not apply to S-ILS all Cats. Circling NA northwest of Rwy 4L-22R. DME required. Helicopter visibility reduction below 3/4 SM NA.

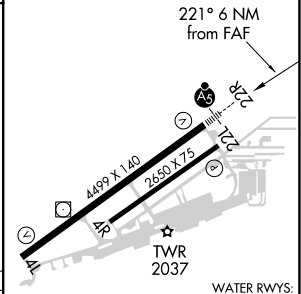
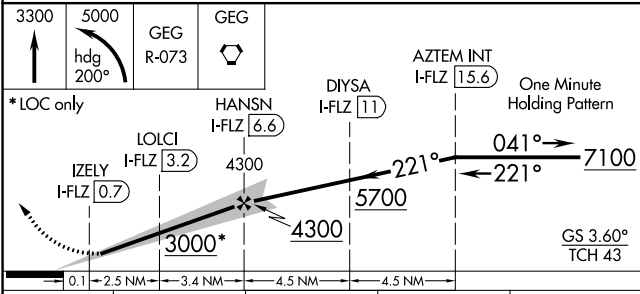
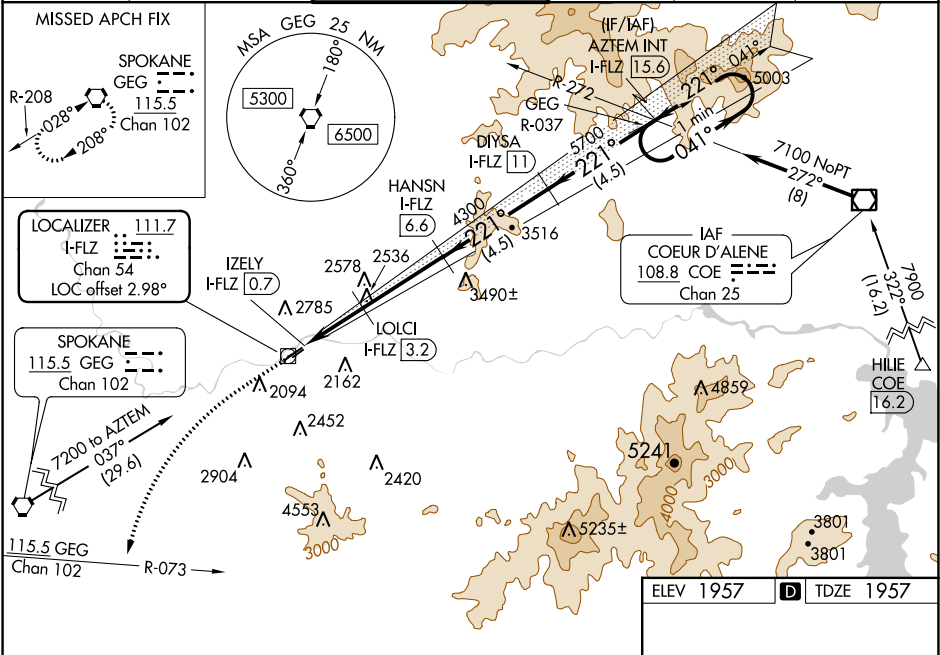
⚠ When local altimeter setting not received, use Spokane Intl altimeter setting

⚠ -16°C and increase all DA 82 feet and all MDA 100 feet; and increase S-LOC Cat C visibility 1/8 and Circling Cat C visibility 1/4. For inop MALSR, increase S-LOC Cat A visibility to 1 and Cat C visibility to 2 1/2.

MALSR

MISSED APPROACH: Climb to 3300 then climbing left turn to 5000 on heading 200° and on GEG VORTAC R-073 to GEG VORTAC and hold.

ATIS 120.55	SPOKANE APP CON 133.35 263.0	FELTS TOWER ★ 132.5 (CTAF) 239.025	GND CON 121.7	CLNC DEL 121.7	UNICOM 122.95
----------------	---------------------------------	---------------------------------------	------------------	-------------------	------------------



CATEGORY	A	B	C	D
S-ILS 22R	2227-3/4 270 (300-3/4)	2227-1 270 (300-1)	2227-1 270 (300-1)	NA
S-LOC 22R	2800-3/4 843 (900-3/4)	2800-1 843 (900-1)	2800-1 843 (900-1)	NA
CIRCLING	2800-1 843 (900-1)	2800-1 843 (900-1)	3020-3 1063 (1100-3)	NA

REIL Rwy 4L 1
MIRL Rwy 4L-22R 1

NW-1, 03 DEC 2020 to 31 DEC 2020

NW-1, 03 DEC 2020 to 31 DEC 2020