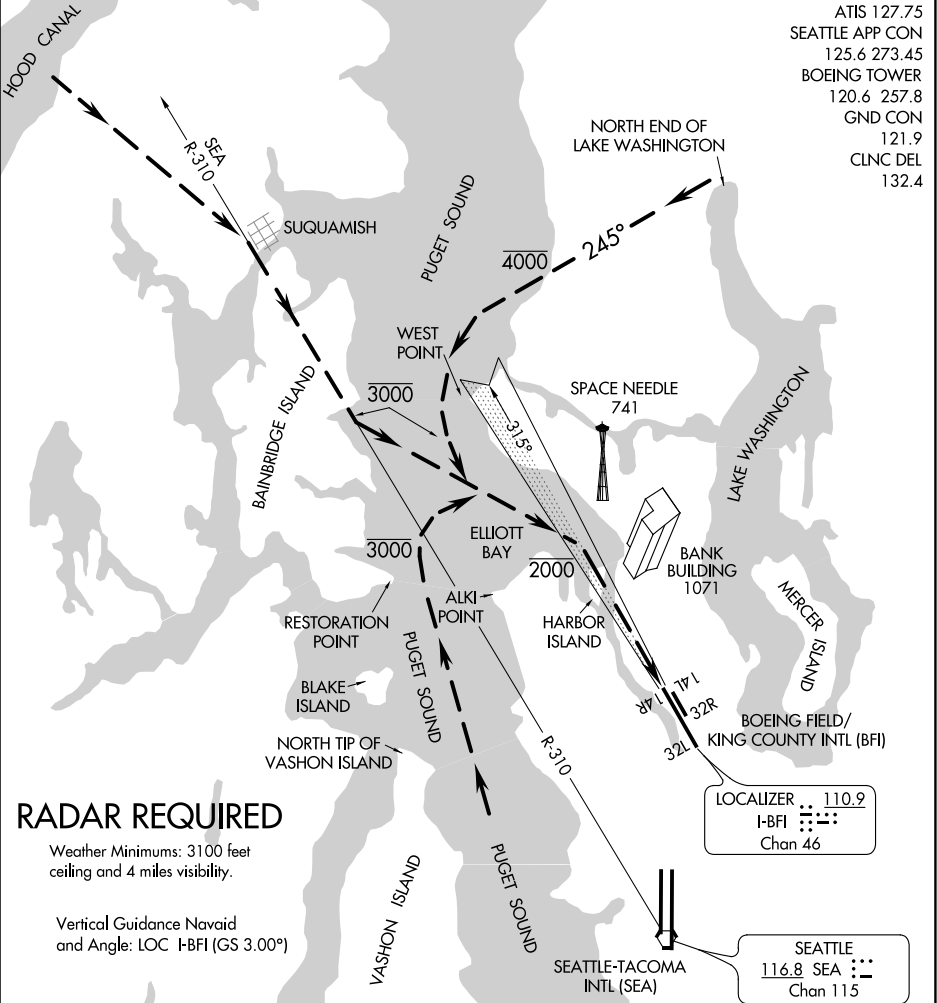


# HARBOR VISUAL RWY 14R

AL-384 (FAA)

BOEING FIELD/KING COUNTY INTL (BFI)  
SEATTLE, WASHINGTON

ATIS 127.75  
SEATTLE APP CON  
125.6 273.45  
BOEING TOWER  
120.6 257.8  
GND CON  
121.9  
CLNC DEL  
132.4



## RADAR REQUIRED

Weather Minimums: 3100 feet ceiling and 4 miles visibility.

Vertical Guidance Navaid and Angle: LOC I-BFI (GS 3.00°)

NM	1	2	3	4	5	6	7	8	9	10	11	12	13	14	15	16	17	18	19	20	21	22	23
----	---	---	---	---	---	---	---	---	---	----	----	----	----	----	----	----	----	----	----	----	----	----	----

## HARBOR VISUAL APPROACH RWY 14R

Expect radar vectors from the Northwest, over the Hood Canal on the SEA R-310; from the North and Northeast, to the north end of Lake Washington; from the Southwest, South and Southeast, to Puget Sound abeam the north tip of Vashon Island. When cleared for the Harbor Visual Approach Runway 14R, proceed via the depicted routes over the middle of Puget Sound and Elliott Bay to Harbor Island and complete a straight in visual approach to Boeing Field/King County Intl Airport (BFI). Adherence to the recommended altitudes is strongly recommended to reduce the incidence of TCAS alarms. Visual approaches to Seattle-Tacoma Intl Airport (SEA) may be conducted simultaneously through Elliott Bay. It is essential that all aircraft remain in the center of Elliot Bay for noise abatement.

# HARBOR VISUAL RWY 14R

47°32'N - 122°18'W

SEATTLE, WASHINGTON  
BOEING FIELD/KING COUNTY INTL (BFI)