

SALEM, OREGON

AL-361 (FAA)

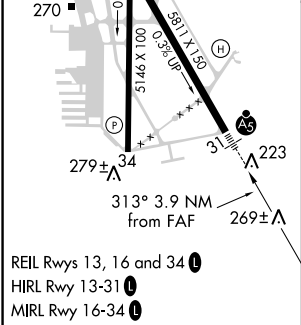
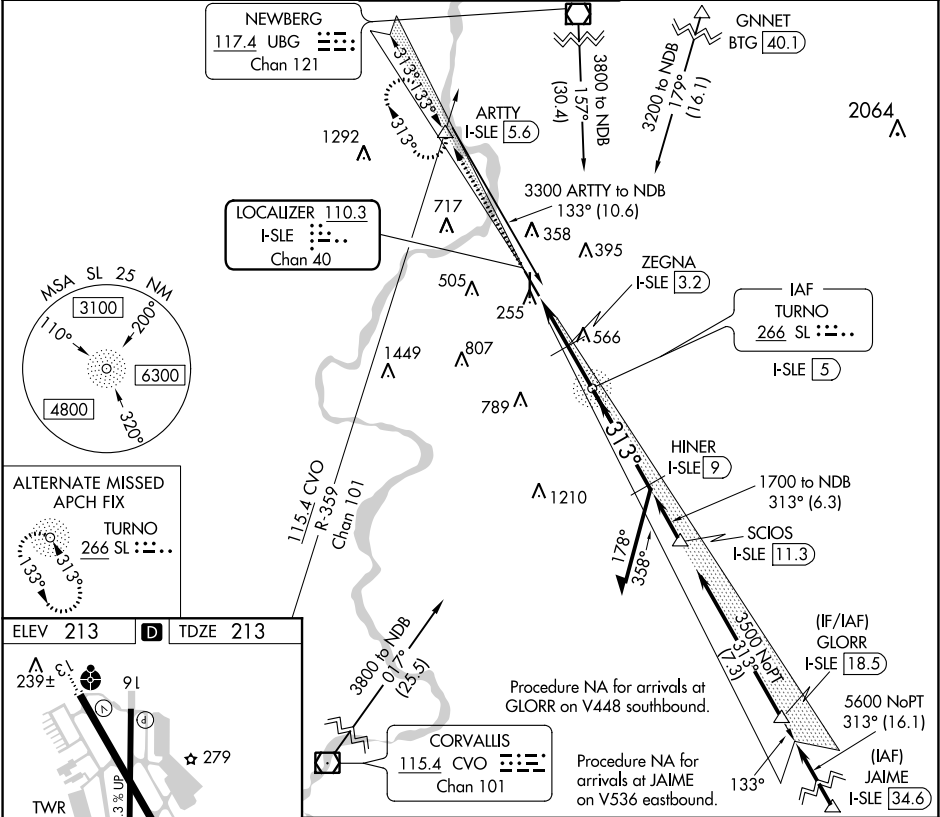
20310

LOC/DME I-SLE 110.3 Chan 40	APP CRS 313°	Rwy Idg 5811 TDZE 213 Apt Elev 213
---	------------------------	---

LOC Y RWY 31
MCNARY FIELD (SLE)

DME required. RADAR required.		MALSR	MISSED APPROACH: Climb to 4000 on I-SLE Localizer NW course (313°) to ARTTY INT/I-SLE 5.6 DME and hold, continue climb-in-hold to 4000.
When local altimeter setting not received, use Mc Minnville altimeter setting and increase all MDAs 60 feet and visibility S-LOC 31 Cat C/D ½ SM and Circling Cat C ¼ SM. For inop ALS, increase S-LOC 31 Cats C and D visibility to 1½ SM. For inop ALS when using Mc Minnville altimeter setting, increase S-LOC 31 Cats C and D visibility to 1¾ SM. VDP NA when using Mc Minnville altimeter setting.			

ATIS 124.55	SEATTLE CENTER 125.8 291.7	SALEM TOWER ★ 119.1 (CTAF) 0 257.2	GND CON 121.9	UNICOM 122.95
-----------------------	--------------------------------------	--	-------------------------	-------------------------



ELEV 213		TDZE 213
ARTTY		* 1080 when using Mc Minnville altimeter setting.
I-SLE NW crs (313°)		SL NDB I-SLE [5]
ZEGNA I-SLE [3.2]		Remain within 10 NM
HINER I-SLE [9]		1700
1020*		2400
1.4 NM		0.7 NM
1.8 NM		4 NM
CATEGORY		A B C D
S-LOC 31		780/24 567 (600-½) 780-1¼ 567 (600-1¼)
CIRCLING		900-1 960-1 1060-2½ 1260-3
		687 (700-1) 747 (800-1) 847 (900-2½) 1047 (1100-3)

SALEM, OREGON
Amdt 4B 05NOV20

44°55'N-123°00'W

MCNARY FIELD (SLE)
LOC Y RWY 31

NW-1, 03 DEC 2020 to 31 DEC 2020

NW-1, 03 DEC 2020 to 31 DEC 2020