

LOC/DME I-SLE	APP CRS	Rwy Idg	5811
110.3	313°	TDZE	214
Chan 40		Apt Elev	214

ILS or LOC Z RWY 31
MCNARY FIELD (SLE)

RADAR required for procedure entry at ARTTY.

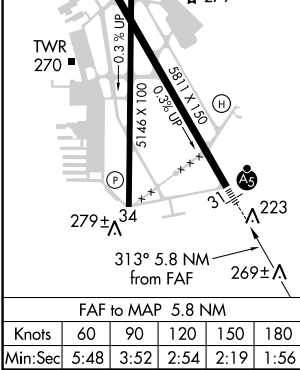
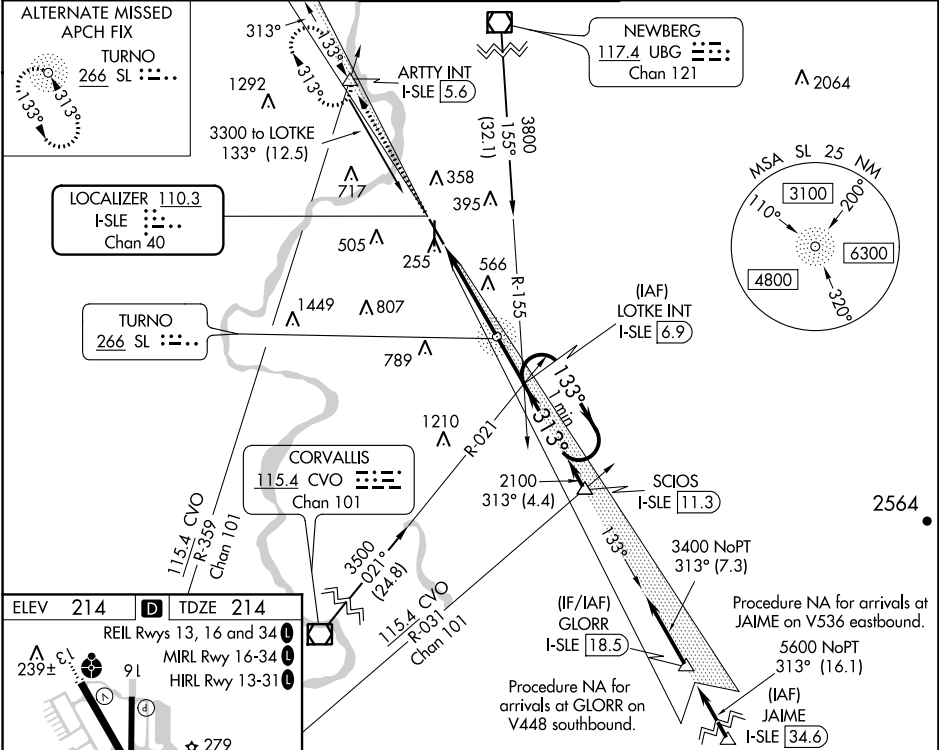
When local altimeter setting not received, use Mc Minnville altimeter setting: increase DA to 463 feet, and all MDA 60 feet; increase S-LOC 31 Cats C/D visibility to 2 SM and Circling Cat A visibility to 1½ SM. VDP NA when using Mc Minnville altimeter setting. For inop ALS, increase S-LOC 31 Cat C/D visibility to 2½ SM. # RVR 1800 authorized with the use of FD or AP or HUD to DA, NA when using Mc Minnville altimeter setting.



MISSED APPROACH: Climb to 4000 on I-SLE Localizer NW course to ARTTY INT/I-SLE 5.6 DME and hold, continue climb-in-hold to 4000.

ATIS	SEATTLE CENTER	SALEM TOWER ★	GND CON	UNICOM
124.55	125.8 291.7	119.1 (CTAF) 0 257.2	121.9	122.95

ALTERNATE MISSED
APCH FIX
TURN0
266 SL ::::



4000	ARTTY INT	LOTKE INT I-SLE 6.9	One Minute Holding Pattern
I-SLE NW crs	I-SLE 1.1	I-SLE 3.5	2100 133° 2400 313°
			GS 3.00° TCH 42
	2.4 NM	3.4 NM	
CATEGORY	A	B	C D
S-ILS 31 #	414/24	200 (200-½)	
S-LOC 31	1020/24 806 (900-½)	1020/40 806 (900-¾)	1020-1⅞ 806 (900-1⅞)
	1020-1 806 (900-1)	1020-1¼ 806 (900-1¼)	1060-2½ 846 (900-2½) 1260-3 1046 (1100-3)
☑ CIRCLING			

NW-1, 03 DEC 2020 to 31 DEC 2020

NW-1, 03 DEC 2020 to 31 DEC 2020