

VOR/DME OCS	APP CRS	Rwy Idg	10000
116.0	255°	TDZE	6760
Chan 107		Apt Elev	6765

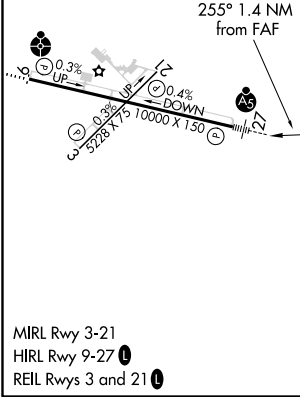
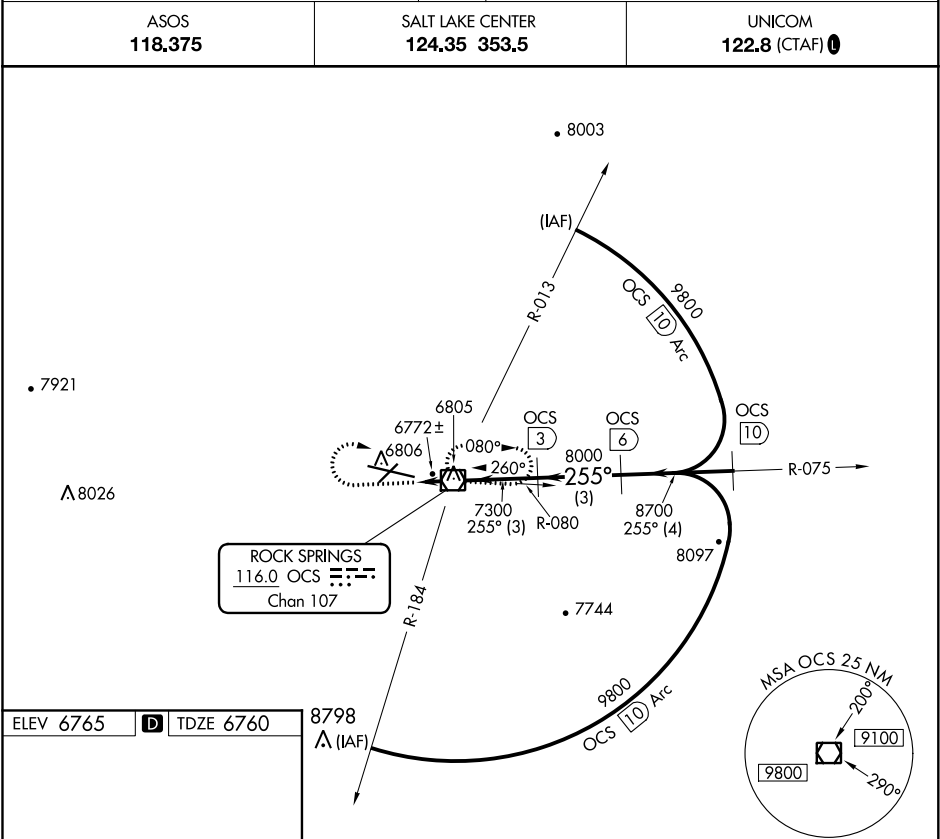
VOR/DME RWY 27
SOUTHWEST WYOMING RGNL (RKS)

Inoperative table does not apply to Cat D.

MALSR

MISSED APPROACH: Climb to 7700, then climbing right turn to 9100 direct OCS VOR/DME and hold.

ASOS 118,375	SALT LAKE CENTER 124,35 353,5	UNICOM 122.8 (CTAF) 0
-----------------	----------------------------------	--------------------------



ELEV 6765	D	TDZE 6760
7700	9100	OCS
OCS 1.4	OCS VOR/DME	OCS 3
OCS 6	OCS 10	9800
7300	8000	8700
1.4 NM	3 NM	3 NM
4 NM	Procedure Turn NA	
CATEGORY	A	B
S-27	7040-1 280 (300-1/2)	7040-1 280 (300-1)
CIRCLING	7140-1 375 (400-1)	7220-1 455 (500-1)
	7220-1 1/2 455 (500-1 1/2)	NA

NW-1, 03 DEC 2020 to 31 DEC 2020

NW-1, 03 DEC 2020 to 31 DEC 2020