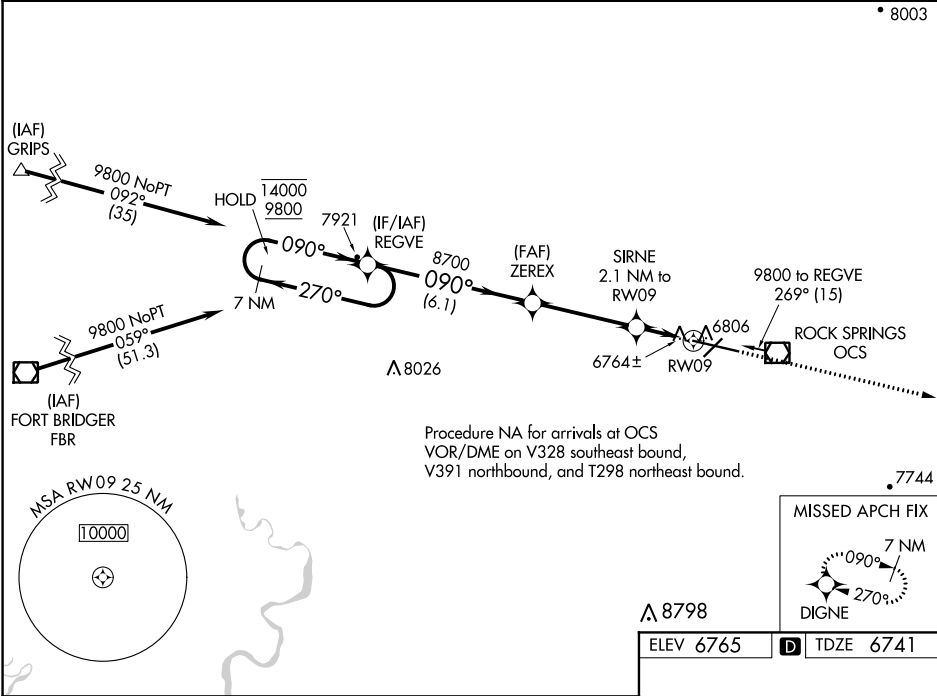


WAAS CH 66016 W09A	APP CRS 090°	Rwy Idg 10000 TDZE 6741 Apt Elev 6765
--	------------------------	--

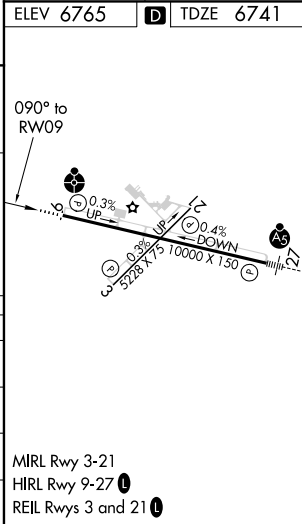
RNAV (GPS) RWY 9
SOUTHWEST WYOMING RGNL (R.K.S)

RNP APCH.	ODALS	MISSED APPROACH: Climb to 9600 direct DIGNE and hold.
▼ For uncompensated Baro-VNAV systems, LNAV/VNAV NA below -28°C or above 45°C .		

ASOS 118.375	SALT LAKE CENTER 124.35 353.5	UNICOM 122.8 (CTAF) 0
------------------------	---	---------------------------------



7 NM Holding Pattern		REGVE		ZEREX		SIRNE 2.1 NM to RW09		9600 ↑		DIGNE ✳	
14000 9800		←270° 090°→		090°		8700		*LNAV only.			
GP 3.00° TCH 50				8700		*7440		*0.8 NM to RW09		RW09	
		6.1 NM		3.8 NM		1.3 NM		0.8			
CATEGORY	A		B		C		D				
LPV DA	6941-¾ 200 (200-¾)										
LNAV/ VNAV DA	7034-¾ 293 (300-¾)										
LNAV MDA	7040-¾ 299 (300-¾)								7040-1 299 (300-1)		
CIRCLING	7140-1 375 (400-1)		7220-1 455 (500-1)		7220-1½ 455 (500-1½)		7540-2½ 775 (800-2½)				



NW-1, 03 DEC 2020 to 31 DEC 2020

NW-1, 03 DEC 2020 to 31 DEC 2020