

LOC/DME I-RKS  
**109.3**  
Chan **30**

APP CRS  
**270°**

Rwy Idg  
TDZE **6765**  
Apt Elev **6765**

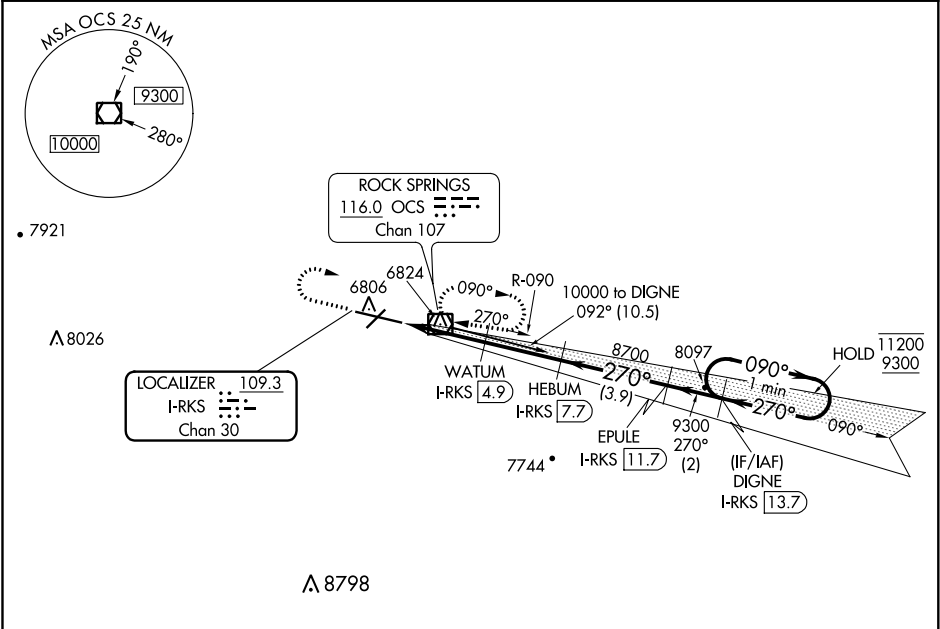
ILS or LOC RWY 27  
SOUTHWEST WYOMING RGNL (RKS)

DME required.

MALSR

MISSED APPROACH: Climb to 7600 then climbing right turn to 9300 direct OCS VOR/DME and hold, continue climb-in-hold to 9300.

ASOS <b>118.375</b>	SALT LAKE CENTER <b>124.35 353.5</b>	UNICOM <b>122.8 (CTAF) 0</b>
------------------------	---	---------------------------------



ELEV 6765 D TDZE 6765

7600	9300	OCS	Use I-RKS DME when on the localizer course.	
*LOC only.	HEBUM I-RKS 7.7	EPULE I-RKS 11.7	DIGNE I-RKS 13.7	
*I-RKS 1.8	WATUM I-RKS 4.9	8700	090° 11200	
7800*	270°	9300	270° 9300	
0.9	2.2 NM	2.8 NM	3.9 NM	
CATEGORY	A	B	C	D
S-ILS-27	6965-½ 200 (200-½)			
S-LOC 27	7100-½ 335 (400-½)			
CIRCLING	7140-1 375 (400-1)	7220-1 455 (500-1)	7220-1½ 455 (500-1½)	7540-2½ 775 (800-2½)

MIRL Rwy 3-21  
HIRL Rwy 9-27 0  
REIL Rws 3 and 21 0