

APP CRS	Rwy Idg	7031
226°	TDZE	3065
	Apt Elev	3080

RNAV (RNP) Z RWY 23

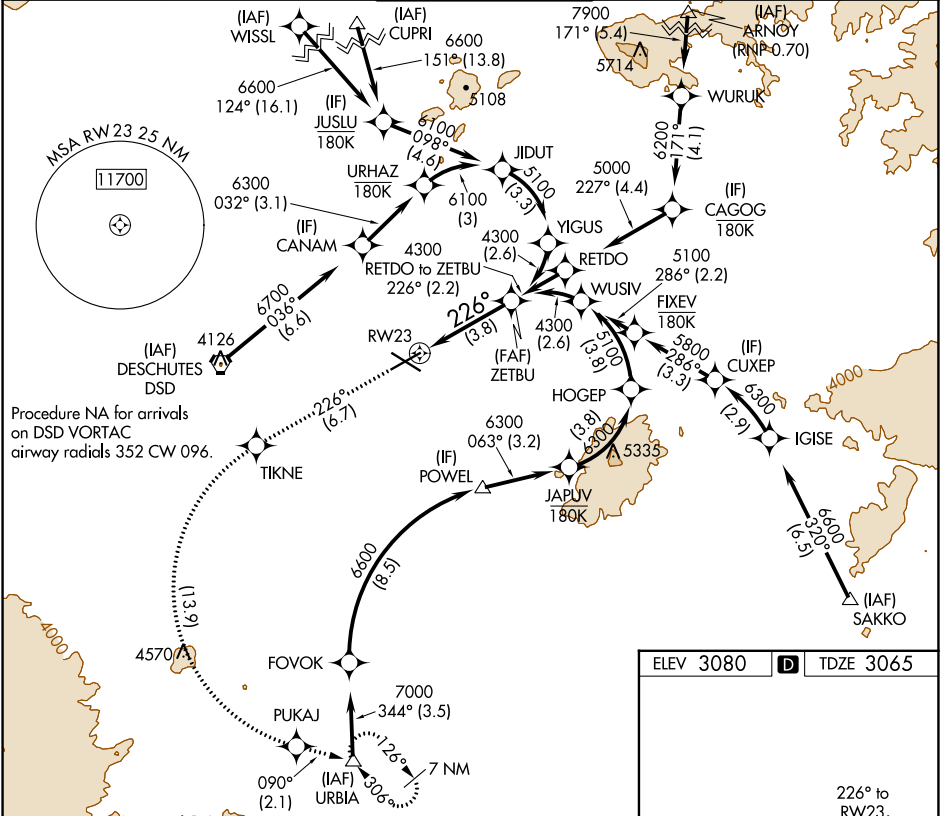
ROBERTS FIELD (RDM)

For uncompensated Baro-VNAV systems, procedure NA below -20°C (-4°F) or above 53°C (129°F). For inop MALSR, increase RNP 0.10 all Cats visibility to ¾ mile. RF required. GPS required.

MALSR

MISSED APPROACH: Climb to 8500 on track 226° to TIKNE left turn to PUKAJ and on track 090° to URBIA and hold, continue climb-in-hold to 8500.

ATIS	SEATTLE CENTER	REDMOND TOWER★	GND CON	UNICOM
119.025	126.15 269.475	124.5 (CTAF) 256.8	121.8	122.95



8500

TIKNE

PUKAJ

tr 090°

URBIA

ZETBU

VGSI and RNAV glidepath not coincident (VGSI Angle 3.00/TCH 51).

See planview for multiple IF locations.

GP 3.00° TCH 47

CATEGORY	A	B	C	D
RNP 0.10 DA	3315-½ 250 (300-½)			
RNP 0.30 DA	3552-1¼ 487 (500-1¼)			

AUTHORIZATION REQUIRED

ELEV 3080 TDZE 3065

REIL Rwy 5, 11, and 29
HIRL Rwy 5-23
MIRL Rwy 11-29

NW-1, 03 DEC 2020 to 31 DEC 2020

NW-1, 03 DEC 2020 to 31 DEC 2020