

| | | | |
|---------------|---------|----------|------|
| LOC/DME I-RDM | APP CRS | Rwy Idg | 7031 |
| 109.1 | 226° | TDZE | 3065 |
| Chan 28 | | Apt Elev | 3080 |

ILS or LOC RWY 23

ROBERTS FIELD (RDM)

NA

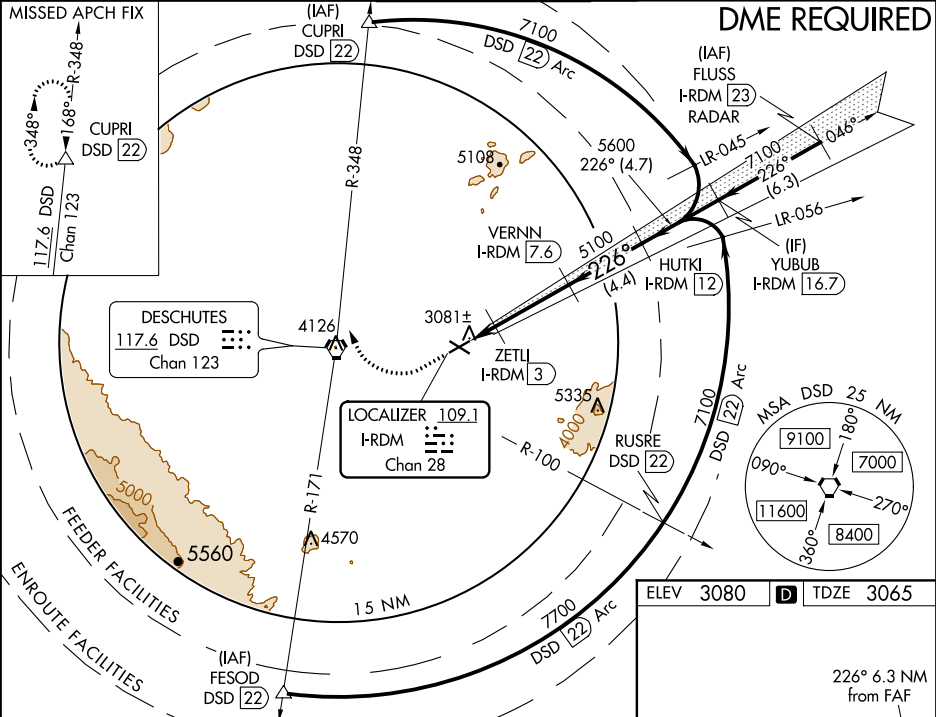
Autopilot coupled approach NA below 4370. DME required. When local altimeter setting not received, use Bend altimeter setting: increase DA to 3341 feet; increase all MDAs 80 feet and all Cat C, D and E visibilities ½ mile. For inop MALSR, increase S-ILS-23 Cat E visibility to ¾ mile and S-LOC-23 Cats C, D and E visibility to 1 mile. When using Bend altimeter setting increase S-ILS-23 all Cats visibility to 1 mile and increase S-LOC-23 Cats C, D and E visibility to 1 ½ mile. VDP NA when using Bend altimeter setting.

MALSR

MISSED APPROACH:

Climb to 3700 then climbing right turn to 7000 on heading 320° and DSD VORTAC R-348 to CUPRI/DSD 22 DME and hold.

| | | | | |
|---------|----------------|--------------------|---------|--------|
| ATIS | SEATTLE CENTER | REDMOND TOWER★ | GND CON | UNICOM |
| 119.025 | 126.15 269.475 | 124.5 (CTAF) 256.8 | 121.8 | 122.95 |



3700

7000

hdg 320°

DSD R-348

CUPRI

Use I-RDM DME when on the localizer course.

VGSI and ILS glidepath not coincident (VGSI Angle 3.00/TCH 51). Procedure Turn NA.

YUBUB I-RDM 16.7

7100

5600

5100

3580

3

2.4

1.3

1.1

0.6

4.6 NM

4.4 NM

4.7 NM

| | | | | | |
|----------|-----------------------|-----------------------|-------------------------|-----------------------|-------------------------|
| CATEGORY | A | B | C | D | E |
| S-ILS 23 | 3265-½ 200 (200-½) | | | | |
| S-LOC 23 | 3440-½ | 375 (400-½) | 3440-⅝ | 375 (400-⅝) | |
| CIRCLING | 3540-1 460 (500-1) | 3560-1 480 (500-1) | 3640-1½ 560 (600-1½) | 3740-2 660 (700-2) | 3820-2½ 740 (800-2½) |

ELEV 3080

TDZE 3065

226° 6.3 NM from FAF

REIL Rwy 5, 11 and 29

HIRL Rwy 5-23

MIRL Rwy 11-29