

WAAS CH 40004 W10A	APP CRS 103°	Rwy Idg 11000 TDZE 24 Apt Elev 31
--	------------------------	--

RNAV (GPS) Y RWY 10R
PORTLAND INTL (PDX)

PORTLAND INTL (PDX)

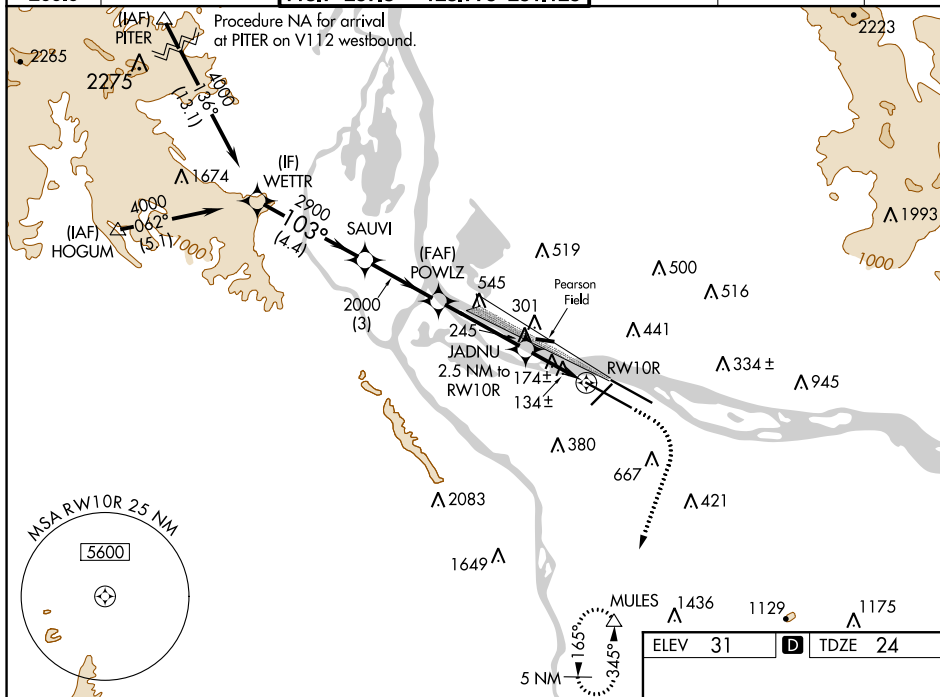
T For uncompensated Baro-VNAV systems, LNAV/VNAV NA below -15°C (5°F) or above 54°C (130°F). DME/DME RNP-0.3 NA. Simultaneous approach authorized with Rwy 10L. Use of FD or AP providing RNAV track guidance required during simultaneous operations. LNAV procedure NA during simultaneous operations.

ALSF-2

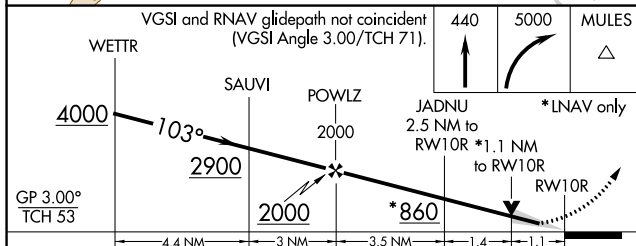



MISSED APPROACH: Climb to 440 then climbing right turn to 5000 direct MULES and hold.

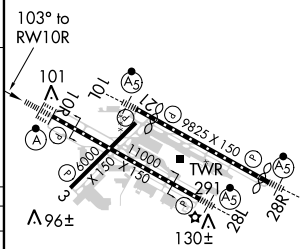
D-ATIS 128.35 269.9	PORTLAND APP CON 124.35 299.2	PORTLAND TOWER Rwy 10L-28R Rwys 3-21, 10R-28L 118.7 257.8 123.775 251.125	GND CON 121.9 348.6	CLNC DEL 120.125 318.1	CPDLC
---------------------------	----------------------------------	---	------------------------	---------------------------	-------



NW-1, 03 DEC 2020 to 31 DEC 2020



CATEGORY	A	B	C	D
LPV DA	224/18		200 (200-½)	
LNAV/ VNAV DA	329/24		305 (300-½)	
LNAV MDA	440/24	416 (500-½)	440/40	416 (500-¾)
 CIRCLING	720-1 689 (700-1)	760-1 729 (800-1)	1060-3	1029 (1100-3)



REIL Rwy 3 and 21
TDZ/CL Rwy 10R
MIRL Rwy 3-21
HIRL Rwy 10L-28R and 10R-28L