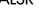
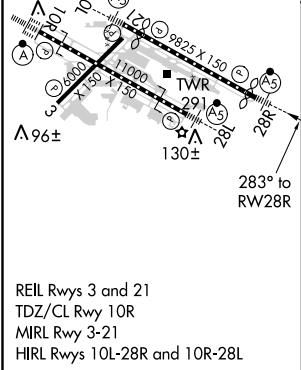
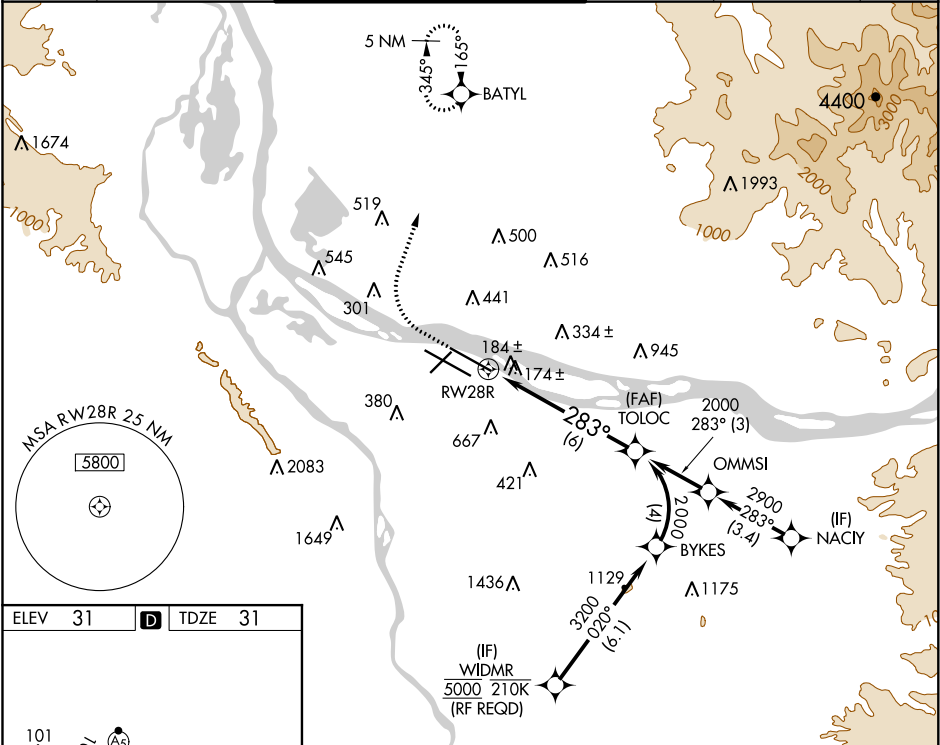


|         |          |      |
|---------|----------|------|
| APP CRS | Rwy Idg  | 9290 |
| 283°    | TDZE     | 31   |
|         | Apt Elev | 31   |

RNAV (RNP) Z RWY 28R  
PORTLAND INTL (PDX)

|   |                                  |   |   |   |       |  |
|---|----------------------------------|---|---|---|-------|--|
| RNP AR APCH.  |                                  |   | <div>MALSR</div> <div></div> | MISSED APPROACH:<br>Climb to 600 then climbing<br>right turn to 4400 direct<br>BATYL and hold, continue<br>climb-in-hold to 4400. |       |  |
| Use of FD or AP providing RNAV track guidance required during simultaneous operations. Simultaneous approach authorized with Rwy 28L RADAR required. For uncompensated Baro-VNAV systems, procedure NA below -6°C or above 54°C. For inop ALS increase RNP 0.20 all Cnts visibility to 1 1/2 SM, and increase RNP 0.30 all Cnts visibility to 1 1/2 SM. |                                  |   |   |   |       |  |
| D-ATIS<br>128.35<br>269.9   | PORTLAND APP CON<br>124.35 299.2 | PORTLAND TOWER<br>Rwy 10L-28R<br>118.7 257.8<br>Rwys 3-21, 10R-28L<br>123.775 251.125 | GND CON<br>121.9 348.6  | CLNC DEL<br>120.125 318.1   | CPDLC |  |



|                        |        |               |  |
|------------------------|--------|---------------|--|
| 600                    | 4400   | BATYL         | VGSI and RNAV glidepath not coincident (VGSI Angle 3.00/TCH 70). |
|                        |        |               |  |
| CATEGORY               | A      | B             | C  |
| RNP 0.20 DA            | 417/40 | 386 (400-3/4) | 417/50   |
| RNP 0.30 DA            |        | 471/50        | 440 (500-1)  |
| AUTHORIZATION REQUIRED |        |               |  |

NW-1, 03 DEC 2020 to 31 DEC 2020

NW-1, 03 DEC 2020 to 31 DEC 2020