

APP CRS	Rwy Idg	11000
283°	TDZE	23
	Apt Elev	31

RNAV (RNP) Z RWY 28L

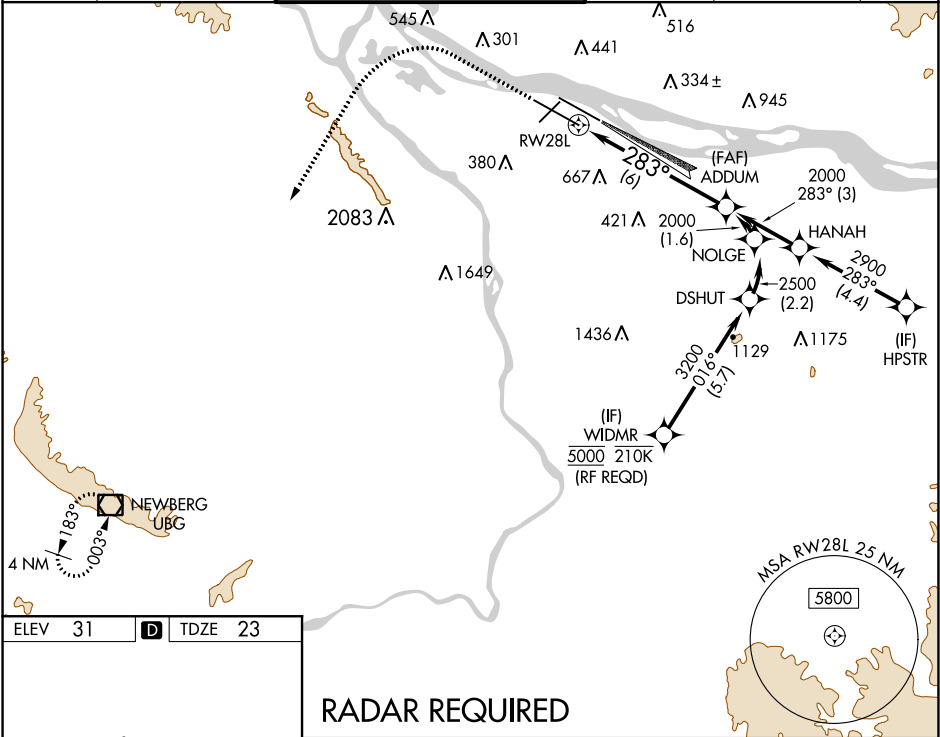
PORTLAND INTL (PDX)

▼ For uncompensated Baro-VNAV systems, procedure NA below -15°C (5°F) or above 54°C (130°F). For inoperative MALSR, increase RNP 0.27 all Cats visibility to RVR 6000 and increase RNP 0.30 all Cats visibility to 1½ mile. Simultaneous approach authorized with Rwy 28R. GPS Required. Use of FD or AP providing RNAV track guidance required during simultaneous operations.

MALSR

MISSED APPROACH: Climb to 2100 then climbing left turn to 4000 direct UBG VOR/DME and hold.

D-ATIS	PORTLAND APP CON	PORTLAND TOWER	GND CON	CLNC DEL	CPDLC
128.35 269.9	124.35 299.2	Rwy 10L-28R 118.7 257.8 Rwys 3-21, 10R-28L 123.775 251.125	121.9 348.6	120.125 318.1	



ELEV 31

D

TDZE 23

REIL Rwys 3 and 21
TDZ/CL Rwy 10R
MIRL Rwy 3-21
HIRL Rwys 10L-28R and 10R-28L

RADAR REQUIRED

2100

4000

UBG

VGSI and RNAV glidepath not coincident (VGSI Angle 3.00/TCH 72).

ADDUM

2000

2000

283°

RW28L

GP 3.00°

TCH 55

CATEGORY	A	B	C	D
RNP 0.27 DA		374/35	351 (400-¾%)	
RNP 0.30 DA		494/60	471 (500-1¼%)	

AUTHORIZATION REQUIRED