

APP CRS 103°	Rwy Idg 11000 TDZE 24 Apt Elev 31
------------------------	--

RNAV (RNP) Z RWY 10R
PORTLAND INTL (PDX)

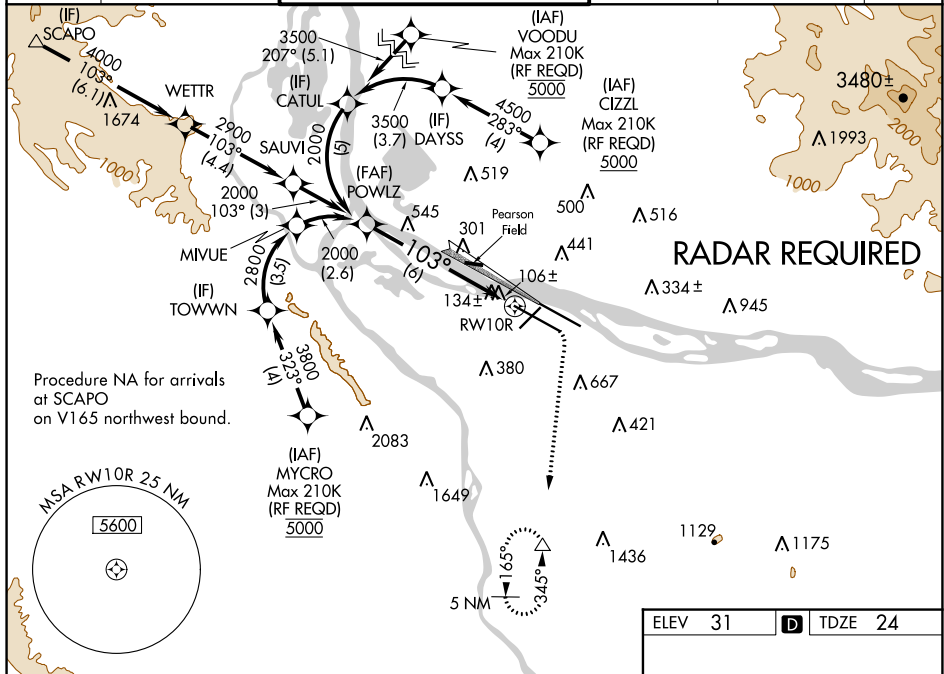
▼ GPS required. For inoperative ALSF, increase RNP 0.10 all Cats visibility to RVR 5000 and 0.30 all Cats visibility to 1 $\frac{3}{8}$ miles. For uncompensated Baro-VNAV systems, procedure NA below -15°C (5°F) or above 54°C (130°F). Simultaneous approach authorized with Rwy 10L. Use of FD or AP providing RNAV track guidance required during simultaneous operations.

ALSF-2

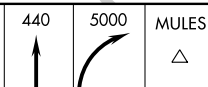


MISSED APPROACH: Climb to 440 then climbing right turn to 5000 direct MULES and hold, continue climb-in-hold to 5000.

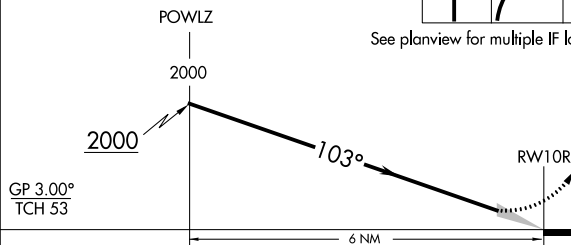
D-ATIS 128.35 269.9	PORTLAND APP CON 124.35 299.2	PORTLAND TOWER Rwy 10L-28R 118.7 257.8	Rwys 3-21, 10R-28L 123.775 251.125	GND CON 121.9 348.6	CLNC DEL 120.125 318.1	CPDLC
----------------------------------	---	---	--	-------------------------------	----------------------------------	-------



VGSI and RNAV glidepath not coincident
(VGSI Angle 3.00/TCH 71).



See planview for multiple IF locations.



CATEGORY	A	B	C	D
RNP 0.10 DA		347/32	323 (400- ⁵ / ₆)	
RNP 0.30 DA		449/50	425 (500-1)	

AUTHORIZATION REQUIRED

