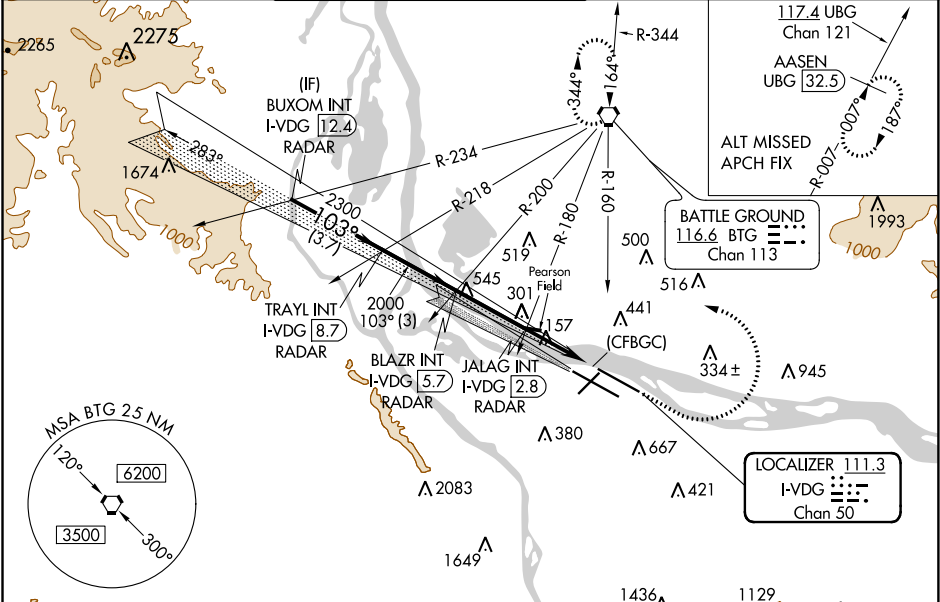


LOC/DME I-VDG	APP CRS	Rwy Idg	8535
111.3	103°	TDZE	30
Chan 50		Apt Elev	31

ILS or LOC RWY 10L  
PORTLAND INTL (PDX)

<p>Simultaneous approach authorized with Rwy 10R.</p> <p>For inoperative MALSR, increase S-ILS visibility all Cats to RVR 4500.</p> <p>S-LOC Cat E visibility to RVR 6000. RADAR or DME required.</p>	<p>MALSR</p>	<p>MISSED APPROACH: Climb to 800 then climbing left turn to 4200 on BTG VORTAC R-160 to BTG VORTAC and hold, continue climb-in-hold to 4200.</p>
---	--------------	--

D-ATIS	PORTLAND APP CON	PORTLAND TOWER	GND CON	CLNC DEL	CPDLC
128.35	124.35 299.2	Rwy 10L-28R 118.7 257.8 Rwys 3-21, 10R-28L 123.775 251.125	121.9 348.6	120.125 318.1	
269.9					



ELEV 31	D	TDZE 30
103° 6 NM from FAF		
REIL Rwys 3 and 21 TDZ/CL Rwy 10R MIRL Rwy 3-21 HIRL Rwys 10L-28R and 10R-28L		
FAF to MAP 5.6 NM		
Knots	60	90 120 150 180
Min:Sec	5:36	3:44 2:48 2:14 1:52

RADAR REQUIRED

BUXOM INT I-VDG 12.4 RADAR		TRAYL INT I-VDG 8.7 RADAR	BLAZR INT I-VDG 5.7 RADAR	JALAG INT I-VDG 2.8 RADAR	(CFBGC)
3000		2300	2000	*1100	
GS 3.00° TCH 49		3.7 NM	3 NM	2.8 NM	2.7 NM 0.5
CATEGORY	A	B	C	D	E
S-ILS 10L	293/24		263 (300-½)		
S-LOC 10L	420/24		390 (400-½)		420/35 390 (400-½)
CIRCLING	720-1 689 (700-1)		760-1 729 (800-1)		1060-3 1029 (1100-3) 1140-3 1109 (1200-3)

NW-1, 03 DEC 2020 to 31 DEC 2020

NW-1, 03 DEC 2020 to 31 DEC 2020