

## ILS or LOC Z RWY 30

LOC I-BRN <b><u>111.7</u></b>	APCH CRS <b>302°</b>	Rwy Idg <b>13,510</b> TDZE <b>2996</b> Arpt Elev <b>2996</b>
----------------------------------	-------------------------	--

AL-323 [USAF]

MOUNTAIN HOME AFB (KMUO)

**T** \* When ALS inop, increase CAT ABCDE RVR to 47 and vis to 1 mile.  
 \*\* When ALS inop, increase CAT AB RVR to 55 and vis to 1 mile, CAT CDE vis to 1 3/8 miles.

ALSF-1

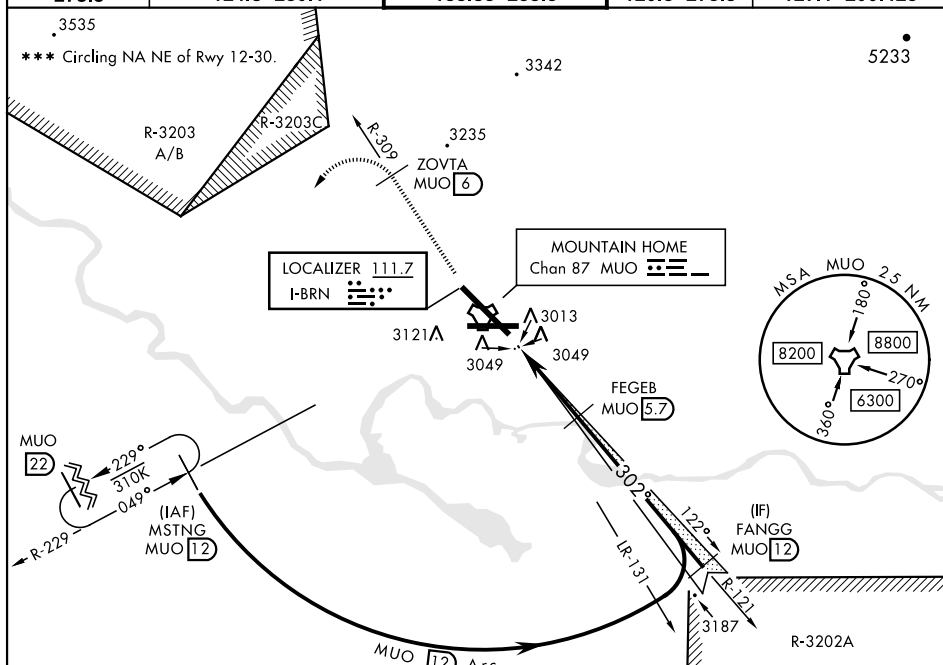
**MISSED APPROACH:** Climb to 10,000 via MUO R-309 to ZOVT/6 DME, turn left and intcp MUO R-229 to MSTNG/12 DME and hold. Continue climb in hold to 10,000.

ATIS 273.5	MOUNTAIN HOME APP CON 124.8 259.1
---------------	--------------------------------------

MOUNTAIN HOME TOWER  
133.85 253.5

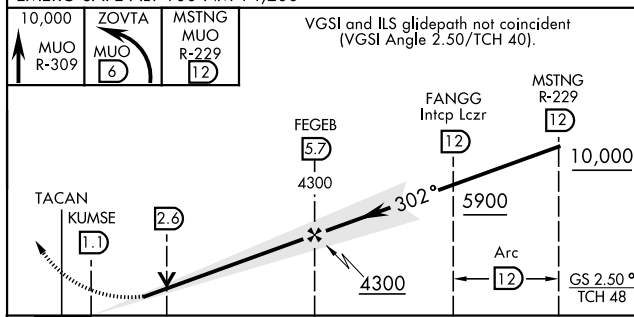
GND CON	
120.5	275.8

CLNC DEL  
127.1 290.425



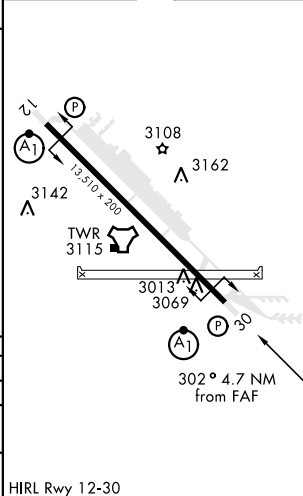
## RADAR or DME REQUIRED

EMERG SAFE ALT 100 NM 14,200



	4.7 NM				
CATEGORY	A	B	C	D	E
S-ILS 30 *	3246/40 250 (300-¾)				
S-LOC 30 **	3460/24 464 (500-½)	3460/50 464 (500-1)			
<b>C</b> CIRCLING ***	3520-1 524 (600-1)	3560-1 564 (600-1)	3560-1½ 564 (600-1½)	3560-2 564 (600-2)	3700-2½ 704 (800-2½)

ELEV 2996	TDZE 2996
-----------	-----------



MOUNTAIN HOME, IDAHO

43°03'N-115°52'W

MOUNTAIN HOME AFB (KMUO)

Amdt 3 18JUN20

## ILS or LOC Z RWY 30

NW-1, 03 DEC 2020 to 31 DEC 2020

NW-1, 03 DEC 2020 to 31 DEC 2020