
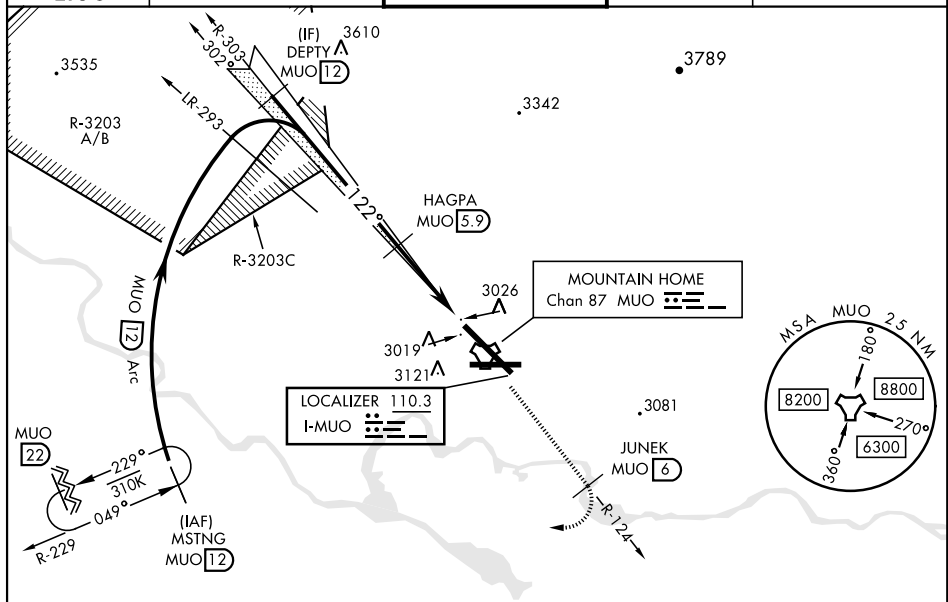


ILS or LOC Z RWY 12

LOC 1-MUO <u>110.3</u>	APCH CRS 122°	Rwy Idg 13,510 TDZE 2987 Arpt Elev 2996	AL-323 [USAF]	MOUNTAIN HOME AFB (KMUO)	
▼ * When ALS inop, increase RVR to 40, vis to $\frac{3}{4}$ mile. ** When ALS inop, increase CAT AB RVR to 55 and vis to 1 mile, CAT CDE vis to $1\frac{3}{4}$ miles. *** Circling NA NE of Rwy 12-30.			ALSF-1 	MISSED APPROACH: Climb to 10,000 via MUO R-124 to JUNEK/6 DME, turn right and intercept MUO R-229 to MSTNG/12 DME and hold. Continue climb in hold to 10,000.	
ATIS 275.3	MOUNTAIN HOME APP CON 124.8 259.1		MOUNTAIN HOME TOWER 133.85 253.5		GND CON 120.5 275.8
				CLNC DEL 127.1 290.425	



RADAR or DME REQUIRED

EMERG SAFE ALT 100 NM 14,200

