

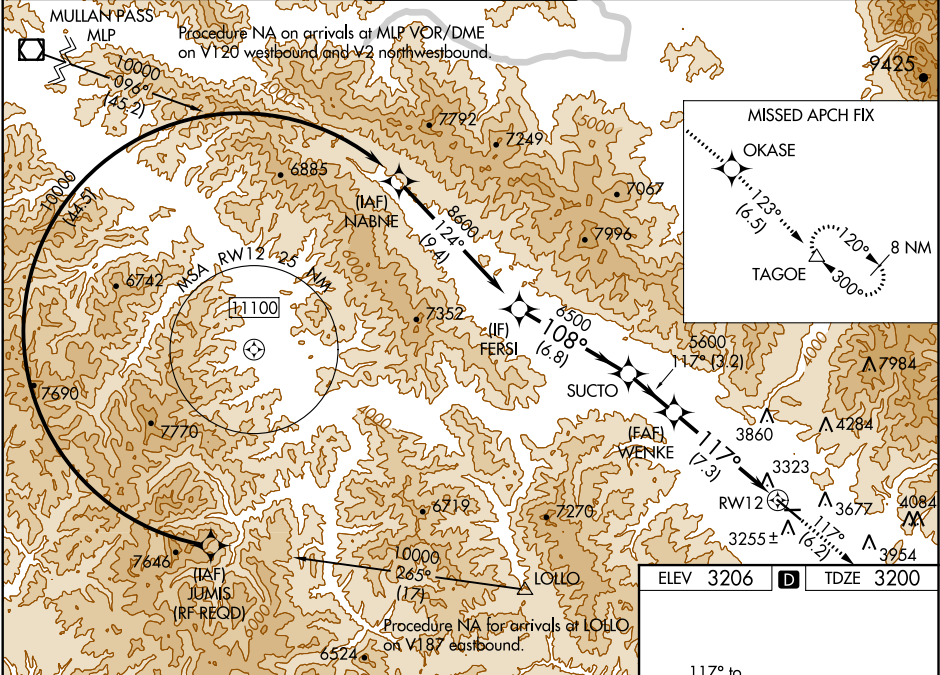
APP CRS	Rwy Idg	<b>9501</b>
<b>117°</b>	TDZE	<b>3200</b>
	Apt Elev	<b>3206</b>

# RNAV (RNP) Z RWY 12

MISSOULA INTL (MISO)

RNP AR apch.	MALSR	MISSED APPROACH: Climb to 13000 on track 117° to OKASE and on track 123° to TAGOE and hold, continue climb-in-hold to 13000. *Missed approach requires minimum climb of 350 feet per NM to 8300; if unable to meet climb gradient, see RNAV (GPS) Y RWY 12. #Missed approach requires minimum climb of 425 feet per NM to 8300.
 For uncompensated Baro-VNAV systems, LNAV/VNAV NA below -21° C (-6°F) or above 43°C (109°F).  -12°C For inop ALS, increase RNP 0.12 all Cats visibility to RVR 6000. For inop ALS, increase RNP 0.30 all Cats visibility to 2½ SM. When local weather not received, procedure NA.		

ATIS <b>126.65</b>	SPOKANE APP CON * <b>124.9 298.95</b>	MISSOULA TOWER * <b>118.4 (CTAF) 0 377.175</b>	GND CON <b>121.9</b>	UNICOM <b>122.95</b>
-----------------------	--	---	-------------------------	-------------------------



VGSI and RNAV glidepath not coincident (VGSI Angle 3.00/TCH 55).		13000 ↑ tr 117°	OKASE 	tr 123°	TAGOE △		
FERSI		SUCTO		WENKE		RW12	
8600		6500		5600			
GP 3.00° TCH 45		6.8 NM		3.2 NM		7.3 NM	
CATEGORY		A		B		C	
RNP 0.12 DA#		3518/40		318 (400-¾)			
RNP 0.30 DA*		3880-2		680 (700-2)			
AUTHORIZATION REQUIRED							

RW12

AS

12

4612 X 75

3250

26

5501 X 130

TWR 3300 ±

30

RLLS Rwy 30

REIL Rwy 30

MIRL Rwy 8-26

HIRL Rwy 12-30

NW-1, 03 DEC 2020 to 31 DEC 2020

NW-1, 03 DEC 2020 to 31 DEC 2020