

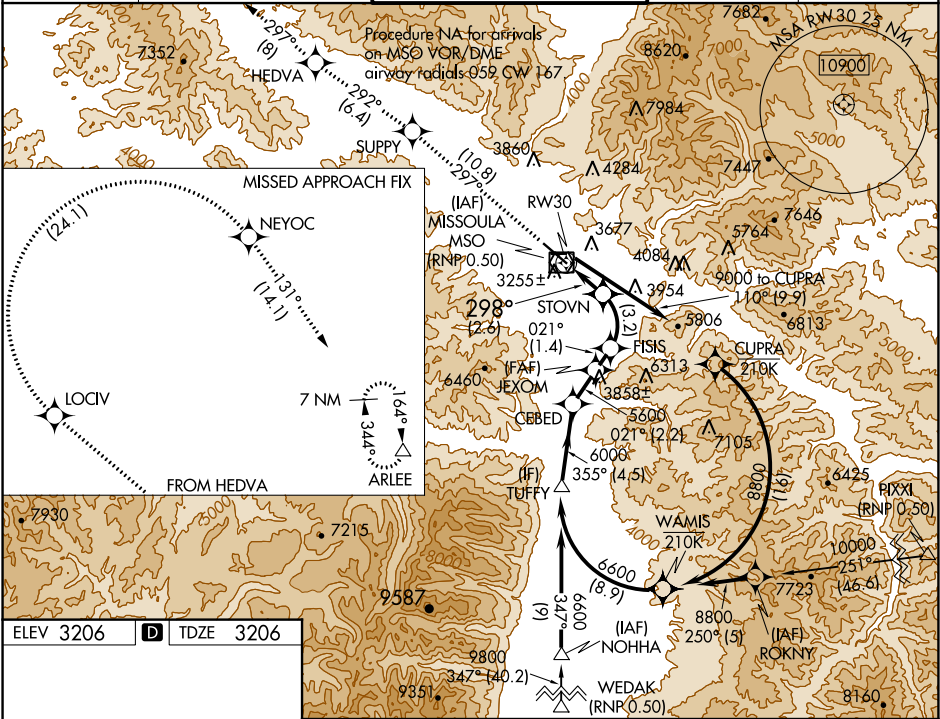
APP CRS	Rwy Idg	9501
298°	TDZE	3206
	Apt Elev	3206

RNAV (RNP) RWY 30

MISSOULA INTL (MSO)

RNP AR APCH, RF required.	MISSED APPROACH: Climb to 11000 on track 297° to SUPPLY and on track 292° to HEDVA and on track 297° to LOCIV, then right turn to NEYOC and on track 131° to ARLEE and hold. *Misted approach requires minimum climb of 215 feet per NM to 5000.
<div><div>▼</div><div>▲</div><div>❄</div></div> <div>For uncompensated Baro-VNAV systems, procedure NA below -21°C (-5°F) or above 43°C (109°F). When local altimeter setting not received, procedure NA.</div>	

ATIS	SPOKANE APP CON *	MISSOULA TOWER *	GND CON	UNICOM
126.65	124.9 298.95	118.4 (CTAF) 377.175	121.9	122.95



ELEV 3206	D	TDZE 3206
-----------	---	-----------

